

Dopamine Receptor D4 antibody [HL2851]

Cat. No. GTX640122

Host	Rabbit
Clonality	Monoclonal
Isotype	IgG
Applications	WB, ICC/IF, IHC-P
Reactivity	Human

Package
100 µl, 25 µl

Applications

Application Note

*Optimal dilutions/concentrations should be determined by the researcher.

Suggested dilution	Recommended dilution
WB	1:1000-1:10000
ICC/IF	Assay dependent
IHC-P	Assay dependent

Not tested in other applications.

Product Note This antibody was raised against human Dopamine Receptor D4 Extracellular domain.

Properties

Form	Liquid
Buffer	PBS
Preservative	No preservatives
Storage	Store as concentrated solution. Centrifuge briefly prior to opening vial. For short-term storage (1-2 weeks), store at 4°C. For long-term storage, aliquot and store at -20°C or below. Avoid multiple freeze-thaw cycles.
Concentration	1 mg/ml (Please refer to the vial label for the specific concentration.)
Immunogen	Synthetic peptide encompassing a sequence within the Extracellular domain human of Dopamine Receptor D4. The exact sequence is proprietary.
Purification	Affinity purified by Protein A.
Conjugation	Unconjugated

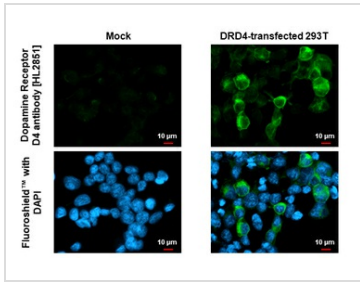
Note For laboratory research use only. Not for any clinical, therapeutic, or diagnostic use in humans or animals. Not for animal or human consumption.

Purchasers shall not, and agree not to enable third parties to, analyze, copy, reverse engineer or otherwise attempt to determine the structure or sequence of the product.



For full product information, images and publications, please visit our [website](#).

DATA IMAGES



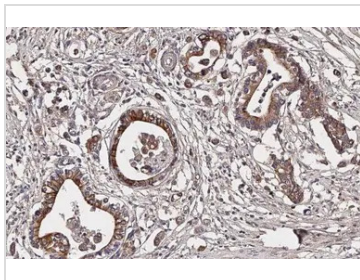
GTX640122 ICC/IF Image

Dopamine Receptor D4 antibody [HL2851] detects Dopamine Receptor D4 protein by immunofluorescent analysis.

Sample: Mock and transfected 293T cells were fixed in ice-cold MeOH for 5 min.

Green: Dopamine Receptor D4 stained by Dopamine Receptor D4 antibody [HL2851] (GTX640122) diluted at 1:500.

Blue: Fluoroshield with DAPI (GTX30920).



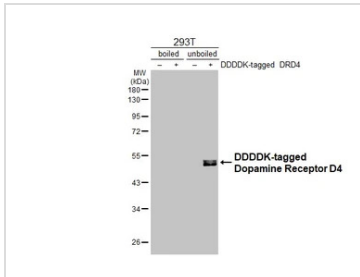
GTX640122 IHC-P Image

Dopamine Receptor D4 antibody [HL2851] detects Dopamine Receptor D4 protein at cell membrane by immunohistochemical analysis.

Sample: Paraffin-embedded human stomach tumor.

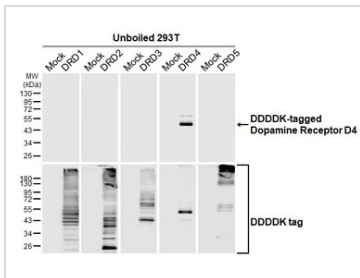
Dopamine Receptor D4 stained by Dopamine Receptor D4 antibody [HL2851] (GTX640122) diluted at 1:100.

Antigen Retrieval: Citrate buffer, pH 6.0, 15 min



GTX640122 WB Image

Non-transfected (-) and transfected (+) boiled and unboiled 293T whole cell extracts (30 μg) were separated by 10% SDS-PAGE, and the membrane was blotted with Dopamine Receptor D4 antibody [HL2851] (GTX640122) diluted at 1:5000. The HRP-conjugated anti-rabbit IgG antibody (GTX213110-01) was used to detect the primary antibody.



GTX640122 WB Image

Unboiled non-transfected (-) and transfected (+) 293T whole cell extracts (30 μg) were separated by 10% SDS-PAGE, and the membrane was blotted with Dopamine Receptor D4 antibody [HL2851] (GTX640122) diluted at 1:5000. The HRP-conjugated anti-rabbit IgG antibody (GTX213110-01) was used to detect the primary antibody.



For full product information, images and publications, please visit our [website](#).