

## CCR10 antibody [HL2852]

**Cat. No. GTX640123**

|                     |                          |
|---------------------|--------------------------|
| <b>Host</b>         | Rabbit                   |
| <b>Clonality</b>    | Monoclonal               |
| <b>Isotype</b>      | IgG                      |
| <b>Applications</b> | ICC/IF, Functional Assay |
| <b>Reactivity</b>   | Human                    |

**Package**  
100 µl, 25 µl

## Applications

**Application Note**

\*Optimal dilutions/concentrations should be determined by the researcher.

| Suggested dilution | Recommended dilution |
|--------------------|----------------------|
| ICC/IF             | Assay dependent      |
| Functional Assay   | Assay dependent      |

Not tested in other applications.

**Observed MW (kDa)** 38 kDa.

**Product Note**

This antibody is specific for human CCR10 protein and does not cross react with human CCR1, CCR2, CCR4, CCR5, CCR7, and CCR9 protein.  
This antibody was raised against human CCR10 Extracellular domain.

## Properties

|                      |  |
|----------------------|--|
| <b>Form</b>          | Liquid   |
| <b>Buffer</b>        | PBS  |
| <b>Preservative</b>  | No preservatives   |
| <b>Storage</b>       | Store as concentrated solution. Centrifuge briefly prior to opening vial. For short-term storage (1-2 weeks), store at 4°C. For long-term storage, aliquot and store at -20°C or below. Avoid multiple freeze-thaw cycles. |
| <b>Concentration</b> | 1 mg/ml (Please refer to the vial label for the specific concentration.)   |
| <b>Immunogen</b>     | Synthetic peptide encompassing a sequence within the Extracellular domain human of CCR10. The exact sequence is proprietary.   |
| <b>Purification</b>  | Affinity purified by Protein A.  |
| <b>Conjugation</b>   | Unconjugated   |



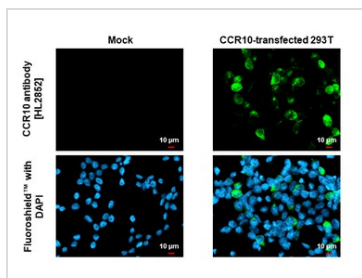
For full product information, images and publications, please visit our [website](#).

For laboratory research use only. Not for any clinical, therapeutic, or diagnostic use in humans or animals. Not for animal or human consumption.

**Note**

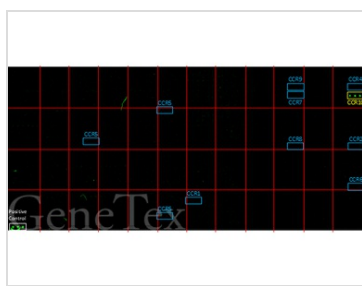
Purchasers shall not, and agree not to enable third parties to, analyze, copy, reverse engineer or otherwise attempt to determine the structure or sequence of the product.

DATA IMAGES



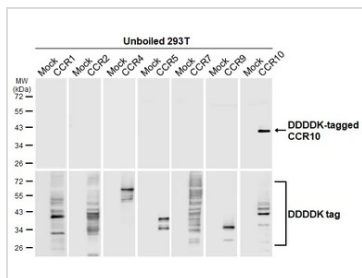
**GTX640123 ICC/IF Image**

CCR10 antibody [HL2852] detects CCR10 protein by immunofluorescent analysis. Sample: Mock and transfected 293T cells were fixed in ice-cold MeOH for 5 min. Green: CCR10 stained by CCR10 antibody [HL2852] (GTX640123) diluted at 1:500. Blue: Fluoroshield with DAPI (GTX30920).



**GTX640123 Functional Assay Image**

CCR10 antibody [HL2852] (GTX640123) specifically detects CCR10 protein on a VirD™-GPCR array (CDI Labs, Baltimore, MD). Array was probed with antibody using a 1:1000 dilution. Yellow: CCR10. Blue: CCR1, CCR2, CCR4, CCR5, CCR6, CCR7, CCR8, and CCR9. White: Positive control.



**GTX640123 Image**

Unboiled non-transfected (-) and transfected (+) 293T whole cell extracts (30 μg) were separated by 10% SDS-PAGE, and the membrane was blotted with CCR10 antibody [HL2852] (GTX640123) diluted at 1:5000. The HRP-conjugated anti-rabbit IgG antibody (GTX213110-01) was used to detect the primary antibody.



For full product information, images and publications, please visit our [website](#).