

Somatostatin receptor 4 antibody [HL2933]

Cat. No. GTX640276

Host	Rabbit
Clonality	Monoclonal
Isotype	IgG
Applications	WB, IHC-P
Reactivity	Human

Package
100 µl, 25 µl

Applications

Application Note

*Optimal dilutions/concentrations should be determined by the researcher.

Suggested dilution	Recommended dilution
WB	Assay dependent
IHC-P	1:100-1:1000

Not tested in other applications.

Product Note

This antibody is specific for human SSTR4 protein, and it does not cross react with human SSTR1, SSTR2, SSTR3, and SSTR5 protein.
This antibody was raised against human SSTR4 Extracellular domain.

Properties

Form	Liquid
Buffer	PBS
Preservative	No preservatives
Storage	Store as concentrated solution. Centrifuge briefly prior to opening vial. For short-term storage (1-2 weeks), store at 4°C. For long-term storage, aliquot and store at -20°C or below. Avoid multiple freeze-thaw cycles.
Concentration	1 mg/ml (Please refer to the vial label for the specific concentration.)
Immunogen	Synthetic peptide encompassing a sequence within the Extracellular domain of human SSTR4. The exact sequence is proprietary.
Purification	Affinity purified by Protein A.
Conjugation	Unconjugated

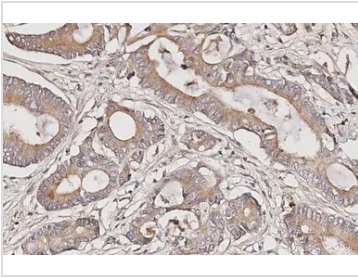
Note

For laboratory research use only. Not for any clinical, therapeutic, or diagnostic use in humans or animals. Not for animal or human consumption.

Purchasers shall not, and agree not to enable third parties to, analyze, copy, reverse engineer or otherwise attempt to determine the structure or sequence of the product.



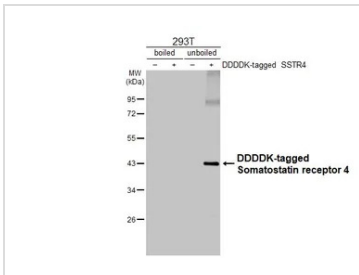
For full product information, images and publications, please visit our [website](#).

DATA IMAGES

GTX640276 IHC-P Image

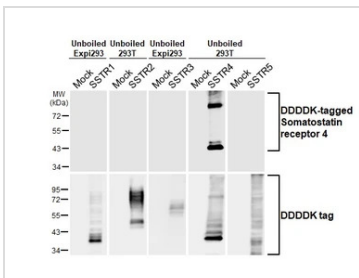
Somatostatin receptor 4 antibody [HL2933] detects Somatostatin receptor 4 protein by immunohistochemical analysis.

Sample: Paraffin-embedded human colon cancer. Somatostatin receptor 4 stained by Somatostatin receptor 4 antibody [HL2933] (GTX640276) diluted at 1:100.

Antigen Retrieval: Citrate buffer, pH 6.0, 15 min


GTX640276 WB Image

Non-transfected (–) and transfected (+) boiled and unboiled 293T whole cell extracts (30 µg) were separated by 10% SDS-PAGE, and the membrane was blotted with Somatostatin receptor 4 antibody [HL2933] (GTX640276) diluted at 1:30000. The HRP-conjugated anti-rabbit IgG antibody (GTX213110-01) was used to detect the primary antibody.


GTX640276 WB Image

Unboiled non-transfected (–) and transfected (+) 293T and Expi293 whole cell extracts (30 µg) were separated by 10% SDS-PAGE, and the membrane was blotted with Somatostatin receptor 4 antibody [HL2933] (GTX640276) diluted at 1:5000. The HRP-conjugated anti-rabbit IgG antibody (GTX213110-01) was used to detect the primary antibody.



For full product information, images and publications, please visit our [website](http://www.genetex.com).