

Smoothened homolog antibody [HL2975]

Cat. No. GTX640362

Host	Rabbit
Clonality	Monoclonal
Isotype	IgG
Applications	WB, FCM, Functional Assay
Reactivity	Human, Mouse

Package
100 µl, 25 µl

Applications

Application Note

*Optimal dilutions/concentrations should be determined by the researcher.

Suggested dilution	Recommended dilution
WB	1:1000-1:10000
FCM	Assay dependent
Functional Assay	Assay dependent

Not tested in other applications.

Observed MW (kDa) 80-100 kDa.

Product Note This antibody was raised against human Smoothened homolog Intracellular domain.

Properties

Form	Liquid
Buffer	PBS
Preservative	No preservatives
Storage	Store as concentrated solution. Centrifuge briefly prior to opening vial. For short-term storage (1-2 weeks), store at 4°C. For long-term storage, aliquot and store at -20°C or below. Avoid multiple freeze-thaw cycles.
Concentration	1 mg/ml (Please refer to the vial label for the specific concentration.)
Immunogen	Recombinant fragment encompassing a sequence within the Intracellular domain of human Smoothened homolog. The exact sequence is proprietary.
Purification	Affinity purified by Protein A.
Conjugation	Unconjugated

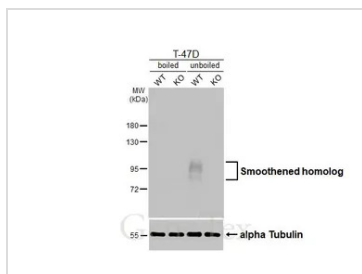


For full product information, images and publications, please visit our [website](#).

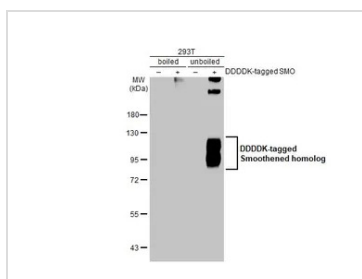
For laboratory research use only. Not for any clinical, therapeutic, or diagnostic use in humans or animals. Not for animal or human consumption.

Note

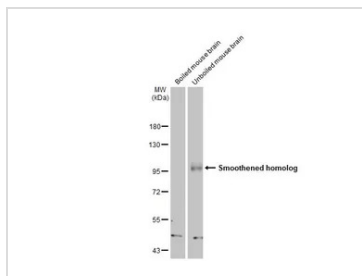
Purchasers shall not, and agree not to enable third parties to, analyze, copy, reverse engineer or otherwise attempt to determine the structure or sequence of the product.

DATA IMAGES

GTX640362 WB Image

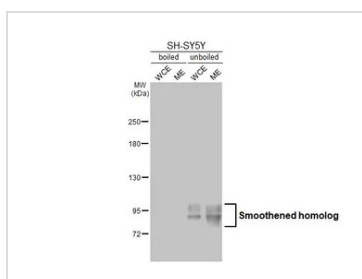
Boiled and unboiled wild-type (WT) and Smoothened homolog knockout (KO) T-47D cell extracts (30 µg) were separated by 7.5% SDS-PAGE, and the membrane was blotted with Smoothened homolog antibody [HL2975] (GTX640362) diluted at 1:1000. The HRP-conjugated anti-rabbit IgG antibody (GTX213110-01) was used to detect the primary antibody, and the signal was developed with Trident ECL plus-Enhanced.


GTX640362 WB Image

Non-transfected (-) and transfected (+) boiled and unboiled 293T whole cell extracts (30 µg) were separated by 7.5% SDS-PAGE, and the membrane was blotted with Smoothened homolog antibody [HL2975] (GTX640362) diluted at 1:5000. The HRP-conjugated anti-rabbit IgG antibody (GTX213110-01) was used to detect the primary antibody.


GTX640362 WB Image

Boiled and unboiled mouse brain extract (50 µg) were separated by 7.5% SDS-PAGE, and the membrane was blotted with Smoothened homolog antibody [HL2975] (GTX640362) diluted at 1:1000. The HRP-conjugated anti-rabbit IgG antibody (GTX213110-01) was used to detect the primary antibody, and the signal was developed with Trident femto Western HRP Substrate.


GTX640362 WB Image

Boiled and unboiled SH-SY5Y whole cell and membrane extracts (30 µg) were separated by 5% SDS-PAGE, and the membrane was blotted with Smoothened homolog antibody [HL2975] (GTX640362) diluted at 1:1000. The HRP-conjugated anti-rabbit IgG antibody (GTX213110-01) was used to detect the primary antibody. (WCE: whole cell extract; ME: membrane extract)



For full product information, images and publications, please visit our [website](https://www.genetex.com).