

# RPL4 antibody [HL3006]

**Cat. No. GTX640419**

|                     |                        |
|---------------------|------------------------|
| <b>Host</b>         | Rabbit                 |
| <b>Clonality</b>    | Monoclonal             |
| <b>Isotype</b>      | IgG                    |
| <b>Applications</b> | WB, IHC-P              |
| <b>Reactivity</b>   | Human, Mouse, Rat, Dog |

**Package**  
100 µl, 25 µl

## Applications

### Application Note

\*Optimal dilutions/concentrations should be determined by the researcher.

| Suggested dilution | Recommended dilution |
|--------------------|----------------------|
| WB                 | 1:500-1:3000         |
| IHC-P              | Assay dependent      |

Not tested in other applications.

**Observed MW (kDa)** 48 kDa.

## Properties

|                      |                                                                                                                                                                                                                            |
|----------------------|----------------------------------------------------------------------------------------------------------------------------------------------------------------------------------------------------------------------------|
| <b>Form</b>          | Liquid                                                                                                                                                                                                                     |
| <b>Buffer</b>        | PBS                                                                                                                                                                                                                        |
| <b>Preservative</b>  | No preservative                                                                                                                                                                                                            |
| <b>Storage</b>       | Store as concentrated solution. Centrifuge briefly prior to opening vial. For short-term storage (1-2 weeks), store at 4°C. For long-term storage, aliquot and store at -20°C or below. Avoid multiple freeze-thaw cycles. |
| <b>Concentration</b> | 1 mg/ml (Please refer to the vial label for the specific concentration.)                                                                                                                                                   |
| <b>Immunogen</b>     | Recombinant fragment of human RPL4.                                                                                                                                                                                        |
| <b>Purification</b>  | Affinity purified by Protein A.                                                                                                                                                                                            |
| <b>Conjugation</b>   | Unconjugated                                                                                                                                                                                                               |

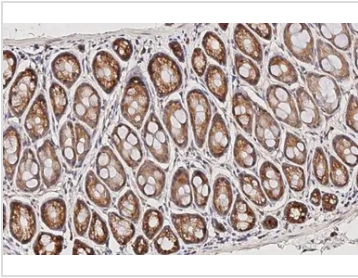
### Note

For laboratory research use only. Not for any clinical, therapeutic, or diagnostic use in humans or animals. Not for animal or human consumption.

Purchasers shall not, and agree not to enable third parties to, analyze, copy, reverse engineer or otherwise attempt to determine the structure or sequence of the product.



For full product information, images and publications, please visit our [website](#).

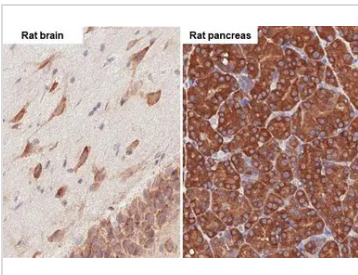
**DATA IMAGES**

**GTX640419 IHC-P Image**

RPL4 antibody [HL3006] detects RPL4 protein by immunohistochemical analysis.

Sample: Paraffin-embedded mouse colon.

RPL4 stained by RPL4 antibody [HL3006] (GTX640419) diluted at 1:100.

Antigen Retrieval: Citrate buffer, pH 6.0, 15 min

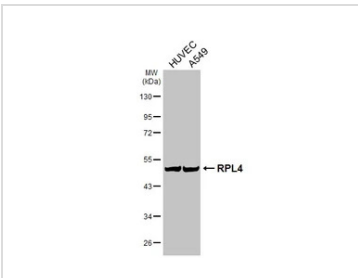

**GTX640419 IHC-P Image**

RPL4 antibody [HL3006] detects RPL4 protein by immunohistochemical analysis.

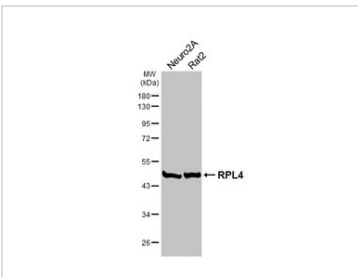
Sample: Paraffin-embedded rat tissues.

RPL4 stained by RPL4 antibody [HL3006] (GTX640419) diluted at 1:100.

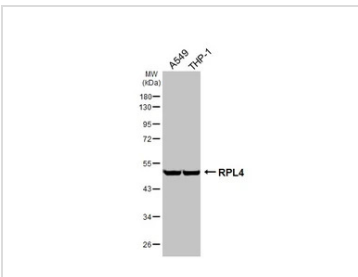
Antigen Retrieval: Citrate buffer, pH 6.0, 15 min


**GTX640419 WB Image**

Various whole cell extracts (30 µg) were separated by 10% SDS-PAGE, and the membrane was blotted with RPL4 antibody [HL3006] (GTX640419) diluted at 1:1000. The HRP-conjugated anti-rabbit IgG antibody (GTX213110-01) was used to detect the primary antibody.


**GTX640419 WB Image**

Various whole cell extracts (30 µg) were separated by 10% SDS-PAGE, and the membrane was blotted with RPL4 antibody [HL3006] (GTX640419) diluted at 1:1000. The HRP-conjugated anti-rabbit IgG antibody (GTX213110-01) was used to detect the primary antibody.


**GTX640419 WB Image**

Various whole cell extracts (30 µg) were separated by 10% SDS-PAGE, and the membrane was blotted with RPL4 antibody [HL3006] (GTX640419) diluted at 1:1000. The HRP-conjugated anti-rabbit IgG antibody (GTX213110-01) was used to detect the primary antibody.



For full product information, images and publications, please visit our [website](https://www.genetex.com).