

HIF1 alpha antibody [HL3011]

Cat. No. GTX640424

Host	Rabbit
Clonality	Monoclonal
Isotype	IgG
Applications	WB, ICC/IF, IHC-P
Reactivity	Human, Mouse, Dog

Package
100 µl, 25 µl

Applications

Application Note

*Optimal dilutions/concentrations should be determined by the researcher.

Suggested dilution	Recommended dilution
WB	1:500-1:3000
ICC/IF	Assay dependent
IHC-P	Assay dependent

Not tested in other applications.

Observed MW (kDa) 120-130 kDa.

Properties

Form	Liquid
Buffer	PBS
Preservative	No preservatives
Storage	Store as concentrated solution. Centrifuge briefly prior to opening vial. For short-term storage (1-2 weeks), store at 4°C. For long-term storage, aliquot and store at -20°C or below. Avoid multiple freeze-thaw cycles.
Concentration	1 mg/ml (Please refer to the vial label for the specific concentration.)
Immunogen	Recombinant fragment of human HIF1 alpha.
Purification	Affinity purified by Protein A.
Conjugation	Unconjugated

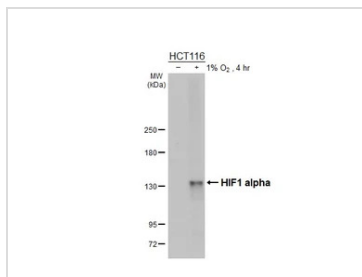
Note

For laboratory research use only. Not for any clinical, therapeutic, or diagnostic use in humans or animals. Not for animal or human consumption.

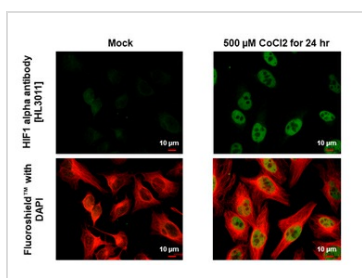
Purchasers shall not, and agree not to enable third parties to, analyze, copy, reverse engineer or otherwise attempt to determine the structure or sequence of the product.



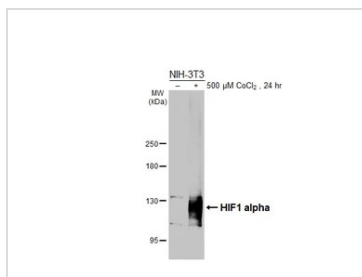
For full product information, images and publications, please visit our [website](#).

DATA IMAGES

GTX640424 WB Image

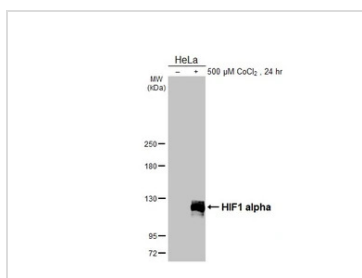
Untreated (–) and treated (+) HCT116 whole cell extracts (30 µg) were separated by 5% SDS-PAGE, and the membrane was blotted with HIF1 alpha antibody [HL3011] (GTX640424) diluted at 1:1000. The HRP-conjugated anti-rabbit IgG antibody (GTX213110-01) was used to detect the primary antibody.


GTX640424 ICC/IF Image

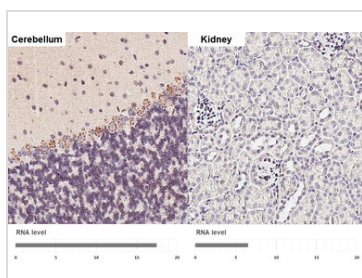
HIF1 alpha antibody [HL3011] detects HIF1 alpha protein by immunofluorescent analysis. Sample: Mock and treated HeLa cells were fixed in 4% paraformaldehyde at RT for 15 min. Green: HIF1 alpha stained by HIF1 alpha antibody [HL3011] (GTX640424) diluted at 1:500. Red: alpha Tubulin, a cytoskeleton marker, stained by alpha Tubulin antibody [GT114] (GTX628802) diluted at 1:1000.


GTX640424 WB Image

Untreated (–) and treated (+) NIH-3T3 whole cell extracts (30 µg) were separated by 5% SDS-PAGE, and the membrane was blotted with HIF1 alpha antibody [HL3011] (GTX640424) diluted at 1:3000. The HRP-conjugated anti-rabbit IgG antibody (GTX213110-01) was used to detect the primary antibody, and the signal was developed with Trident ECL plus-Enhanced.


GTX640424 WB Image

Untreated (–) and treated (+) HeLa whole cell extracts (30 µg) were separated by 5% SDS-PAGE, and the membrane was blotted with HIF1 alpha antibody [HL3011] (GTX640424) diluted at 1:1000. The HRP-conjugated anti-rabbit IgG antibody (GTX213110-01) was used to detect the primary antibody.


GTX640424 IHC-P Image

HIF1 alpha antibody [HL3011] detects HIF1 alpha protein by immunohistochemical analysis. Sample: Paraffin-embedded mouse tissues. HIF1 alpha stained by HIF1 alpha antibody [HL3011] (GTX640424) diluted at 1:100. Antigen Retrieval: Citrate buffer, pH 6.0, 15 min. Corresponding RNA levels (RPKM) in the tissues are based on NCBI database.



For full product information, images and publications, please visit our [website](https://www.genetex.com).