

## CCR9 antibody [HL3054]

Cat. No. GTX640497

Host	Rabbit
Clonality	Monoclonal
Isotype	IgG
Applications	WB, ICC/IF, IHC-P, FCM
Reactivity	Human

Package  
100 µl, 25 µl

## Applications

## Application Note

\*Optimal dilutions/concentrations should be determined by the researcher.

Suggested dilution	Recommended dilution
WB	1:1000-1:10000
ICC/IF	Assay dependent
IHC-P	1:100-1:1000
FCM	Assay dependent

**Note : The FcR Blocking Reagent is recommended for use prior to the addition of the researcher's antibody to samples that contain human Fc receptor-expressing cells.**

Not tested in other applications.

**Product Note** This antibody was raised against human CCR9 Extracellular domain.

## Properties

Form	Liquid
Buffer	PBS
Preservative	No preservative
Storage	Store as concentrated solution. Centrifuge briefly prior to opening vial. For short-term storage (1-2 weeks), store at 4°C. For long-term storage, aliquot and store at -20°C or below. Avoid multiple freeze-thaw cycles.
Concentration	1 mg/ml (Please refer to the vial label for the specific concentration.)
Immunogen	Synthetic peptide encompassing a sequence within the Extracellular domain of human CCR9. The exact sequence is proprietary.
Purification	Affinity purified by Protein A.
Conjugation	Unconjugated



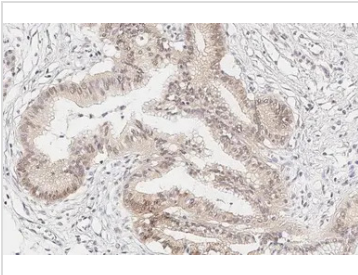
For full product information, images and publications, please visit our [website](#).

Date 2025 / 04 / 28 Page 1 of 2

For laboratory research use only. Not for any clinical, therapeutic, or diagnostic use in humans or animals. Not for animal or human consumption.

**Note**

Purchasers shall not, and agree not to enable third parties to, analyze, copy, reverse engineer or otherwise attempt to determine the structure or sequence of the product.

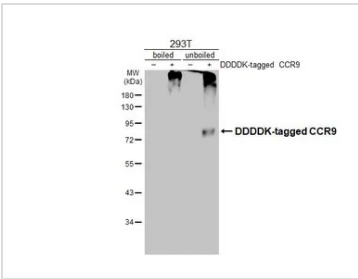
**DATA IMAGES**

**GTX640497 IHC-P Image**

CCR9 antibody [HL3054] detects CCR9 protein by immunohistochemical analysis.

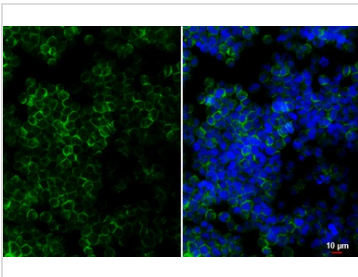
Sample: Paraffin-embedded human pancreatic cancer.

CCR9 stained by CCR9 antibody [HL3054] (GTX640497) diluted at 1:100.

Antigen Retrieval: Citrate buffer, pH 6.0, 15 min


**GTX640497 WB Image**

Non-transfected (–) and transfected (+) boiled and unboiled 293T whole cell extracts (30 µg) were separated by 10% SDS-PAGE, and the membrane was blotted with CCR9 antibody [HL3054] (GTX640497) diluted at 1:5000. The HRP-conjugated anti-rabbit IgG antibody (GTX213110-01) was used to detect the primary antibody, and the signal was developed with Trident femto Western HRP Substrate.

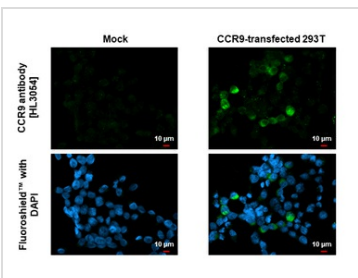

**GTX640497 ICC/IF Image**

CCR9 antibody [HL3054] detects CCR9 protein by immunofluorescent analysis.

Sample: Molt-4 cells were fixed in 4% paraformaldehyde at RT for 15 min.

Green: CCR9 stained by CCR9 antibody [HL3054] (GTX640497) diluted at 1:100.

Blue: Fluoroshield with DAPI (GTX30920).


**GTX640497 ICC/IF Image**

CCR9 antibody [HL3054] detects CCR9 protein by immunofluorescent analysis.

Sample: Mock and transfected 293T cells were fixed in ice-cold MeOH for 5 min.

Green: CCR9 stained by CCR9 antibody [HL3054] (GTX640497) diluted at 1:500.

Blue: Fluoroshield with DAPI (GTX30920).



For full product information, images and publications, please visit our [website](https://www.genetex.com).