

RBPMS antibody [HL3090]

Cat. No. GTX640536

Host	Rabbit
Clonality	Monoclonal
Isotype	IgG
Applications	IHC-P, IHC-Fr, IHC-Wm
Reactivity	Mouse, Rat

 Review (1)

Package
100 µl, 25 µl

Applications

Application Note

*Optimal dilutions/concentrations should be determined by the researcher.

Suggested dilution	Recommended dilution
IHC-P	1:10000~1:20000
IHC-Fr	1:2000~1:4000
IHC-Wm	1:1000~1:2500

Not tested in other applications.

Properties

Form	Liquid
Buffer	PBS
Preservative	No preservatives
Storage	Store as concentrated solution. Centrifuge briefly prior to opening vial. For short-term storage (1-2 weeks), store at 4°C. For long-term storage, aliquot and store at -20°C or below. Avoid multiple freeze-thaw cycles.
Concentration	1 mg/ml (Please refer to the vial label for the specific concentration.)
Immunogen	Recombinant fragment of human RBPMS.
Purification	Affinity purified by Protein A.
Conjugation	Unconjugated

Note

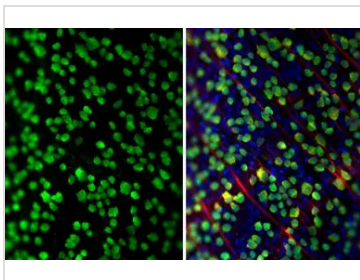
For laboratory research use only. Not for any clinical, therapeutic, or diagnostic use in humans or animals. Not for animal or human consumption.

Purchasers shall not, and agree not to enable third parties to, analyze, copy, reverse engineer or otherwise attempt to determine the structure or sequence of the product.

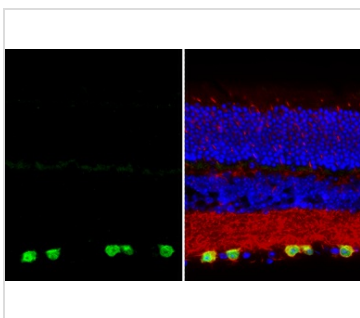


For full product information, images and publications, please visit our [website](#).

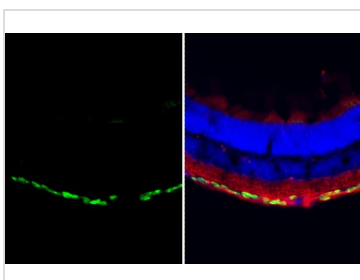
DATA IMAGES

**GTX640536 IHC-Wm Image**

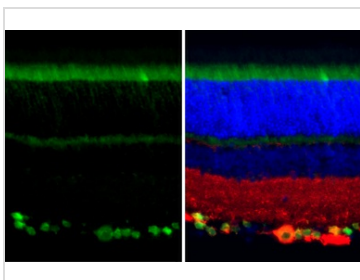
RBPMS antibody [HL3090] detects RBPMS protein by immunohistochemical analysis.
 Sample: Mouse whole-mount retina were fixed in 4% paraformaldehyde at RT for 30 min.
 Green: RBPMS stained by RBPMS antibody [HL3090] (GTX640536) diluted at 1:1000.
 Red: beta Tubulin 3/ Tuj1, stained by beta Tubulin 3/ Tuj1 antibody (GTX631836) diluted at 1:500.
 Blue: Hoechst 33342 staining.
 4% paraformaldehyde at RT for 30 min

**GTX640536 IHC-P Image**

RBPMS antibody [HL3090] detects RBPMS protein by immunohistochemical analysis.
 Sample: Paraffin-embedded mouse eye.
 Green: RBPMS stained by RBPMS antibody [HL3090] (GTX640536) diluted at 1:10000.
 Red: beta Tubulin 3/ Tuj1, stained by beta Tubulin 3/ Tuj1 antibody [GT11710] (GTX631836) diluted at 1:500.
 Blue: Fluoroshield with DAPI (GTX30920).
 Antigen Retrieval: Citrate buffer, pH 6.0, 15 min

**GTX640536 IHC-Fr Image**

RBPMS antibody [HL3090] detects RBPMS protein by immunohistochemical analysis.
 Sample: Frozen-sectioned mouse eye.
 Green: RBPMS stained by RBPMS antibody [HL3090] (GTX640536) diluted at 1:2000.
 Red: beta Tubulin 3/ Tuj1, stained by beta Tubulin 3/ Tuj1 antibody [GT11710] (GTX631836) diluted at 1:500.
 Blue: Fluoroshield with DAPI (GTX30920).

**GTX640536 IHC-P Image**

RBPMS antibody [HL3090] detects RBPMS protein by immunohistochemical analysis.
 Sample: Paraffin-embedded rat eye.
 Green: RBPMS stained by RBPMS antibody [HL3090] (GTX640536) diluted at 1:10000.
 Red: beta Tubulin 3/ Tuj1 antibody [GT11710] (GTX631836) diluted at 1:500.
 Blue: Fluoroshield with DAPI (GTX30920).
 Antigen Retrieval: Citrate buffer, pH 6.0, 15 min



For full product information, images and publications, please visit our [website](#).