

COL4A1 antibody [HMOV327] HistoMAX™

Cat. No. GTX640559

Host	Rabbit
Clonality	Monoclonal
Isotype	IgG
Applications	IHC-P
Reactivity	Human

Package

500 µl, 100 µl

PRODUCT

This antibody was validated on 76 different Normal Tissues by IHC-P.

Summary

[Go to Normal Tissue Gallery](#)

[Go to Cancer Tissue Gallery](#)

Applications

Application Note

*Optimal dilutions/concentrations should be determined by the researcher.

Suggested dilution	Recommended dilution
IHC-P	1:100-1:200

Note : Heat-induced antigen retrieval for 5 minutes in an autoclave at 121°C in pH 7.8 Target Retrieval Solution buffer.

Not tested in other applications.

Product Note

Highly recommended for IHC-P in human tissues.

Properties

Form	Liquid
Buffer	PBS, 2% BSA
Preservative	0.025% ProClin 300
Storage	Store as concentrated solution. Centrifuge briefly prior to opening vial. For short-term storage (1-2 weeks), store at 4°C. For long-term storage, aliquot and store at -20°C or below. Avoid multiple freeze-thaw cycles.
Concentration	7 µg/ml (Please refer to the vial label for the specific concentration.)
Immunogen	Recombinant protein encompassing a sequence within the N-terminus of human COL4A1. The exact sequence is proprietary.
Purification	Affinity purified by Protein A.
Conjugation	Unconjugated



For full product information, images and publications, please visit our [website](#).

For laboratory research use only. Not for any clinical, therapeutic, or diagnostic use in humans or animals. Not for animal or human consumption.

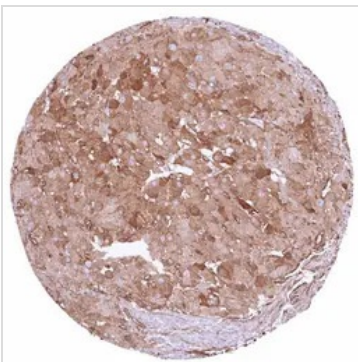
Note

Purchasers shall not, and agree not to enable third parties to, analyze, copy, reverse engineer or otherwise attempt to determine the structure or sequence of the product.

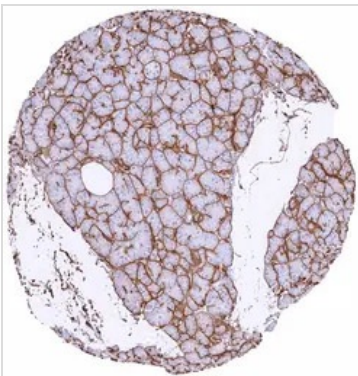
DATA IMAGES

GTX640559 IHC-P Image

IHC-P analysis of human muscular wall from descending colon tissue using GTX640559 COL4A1 antibody [HMV327] HistoMAX™.
Each smooth muscle cell is surrounded by COL4A1.


GTX640559 IHC-P Image

IHC-P analysis of human corpus luteum from ovary tissue using GTX640559 COL4A1 antibody [HMV327] HistoMAX™.
Cytoplasmic COL4A1 staining of corpus luteum cells and strong staining of vessels.


GTX640559 IHC-P Image

IHC-P analysis of human pancreas tissue using GTX640559 COL4A1 antibody [HMV327] HistoMAX™.
Strong COL4A1 staining of basement membranes surrounding acini.



For full product information, images and publications, please visit our [website](#).