

Mycoplasma pneumoniae P1 protein antibody [HL3203]

Cat. No. GTX640843

Host	Rabbit
Clonality	Monoclonal
Isotype	IgG
Applications	WB, ELISA, Lateral Flow, Sandwich ELISA
Reactivity	Mycoplasma pneumoniae

Package
100 µl, 25 µl

Applications

Application Note

*Optimal dilutions/concentrations should be determined by the researcher.

Suggested dilution	Recommended dilution
WB	Assay dependent
ELISA	Assay dependent
Lateral Flow	Assay dependent
Sandwich ELISA	Assay dependent

Note : Capture : GTX640844 / GTX640845, Detection : GTX640843 or Capture : GTX640843 / GTX640844, Detection : GTX640845
Please notice that the detection antibodies need to be conjugated to Gold to function when paired with capture antibodies. Please contact us for custom Gold-conjugated antibody.

Capture : GTX640843, Detection: GTX640845 or Capture : GTX641377, Detection: GTX640843

Please notice that the detection antibody needs to be conjugated to HRP to function when paired with capture antibody.

Please contact us for custom HRP-conjugated antibody.

Not tested in other applications.

Properties

Form	Liquid
Buffer	PBS
Preservative	No preservatives
Storage	Store as concentrated solution. Centrifuge briefly prior to opening vial. For short-term storage (1-2 weeks), store at 4°C. For long-term storage, aliquot and store at -20°C or below. Avoid multiple freeze-thaw cycles.
Concentration	2 mg/ml (Please refer to the vial label for the specific concentration.)
Immunogen	Recombinant fragment of Mycoplasma pneumoniae P1 protein.(strain# ATCC 29342/M129/Subtype 1)
Purification	Affinity purified by Protein A.
Conjugation	Unconjugated



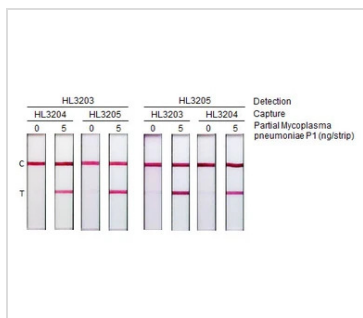
For full product information, images and publications, please visit our [website](#).

For laboratory research use only. Not for any clinical, therapeutic, or diagnostic use in humans or animals. Not for animal or human consumption.

Note

Purchasers shall not, and agree not to enable third parties to, analyze, copy, reverse engineer or otherwise attempt to determine the structure or sequence of the product.

DATA IMAGES



GTX640843 Lateral Flow Image

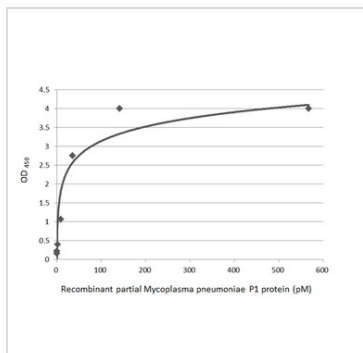
Detection of Mycoplasma pneumoniae P1 protein by lateral flow assay using the indicated recombinant rabbit monoclonal antibodies.

HL3203 : Mycoplasma pneumoniae P1 protein antibody [HL3203] (GTX640843)

HL3204 : Mycoplasma pneumoniae P1 protein antibody [HL3204] (GTX640844)

HL3205 : Mycoplasma pneumoniae P1 protein antibody [HL3205] (GTX640845)

Samples (5 ng) : Recombinant partial Mycoplasma pneumoniae P1 protein



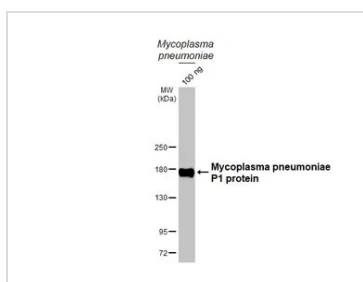
GTX640843 ELISA Image

Sandwich ELISA detection of recombinant E.coli expressed, partial Mycoplasma pneumoniae P1 protein using antibodies as below.

Capture: Mycoplasma pneumoniae P1 protein antibody [HL3203] (GTX640843) (5 µg/mL)

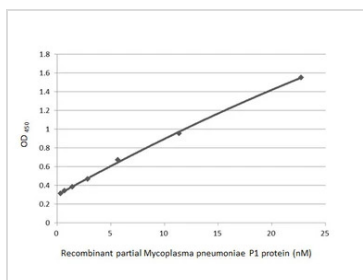
Detection: HRP-conjugated Mycoplasma pneumoniae P1 protein antibody [HL3205] (GTX640845) (1 µg/mL)

Please notice that GTX640845 needs to be conjugated to HRP to function as the detection antibody when paired with GTX640843. Please contact us for custom HRP-conjugated antibody.



GTX640843 WB Image

Mycoplasma pneumoniae extract (100ng) was separated by 5% SDS-PAGE, and the membrane was blotted with Mycoplasma pneumoniae P1 protein antibody [HL3203] (GTX640843) diluted at 1:2000. The HRP-conjugated anti-rabbit IgG antibody (GTX213110-01) was used to detect the primary antibody.



GTX640843 ELISA Image

Sandwich ELISA detection of recombinant E. coli expressed, partial Mycoplasma pneumoniae P1 protein using antibodies as below.

Capture: Mycoplasma pneumoniae P1 protein antibody [GT50] (GTX641374) (5 µg/mL)

Detection: Mycoplasma pneumoniae P1 protein anti body [HL3203] (GTX640843) (1 µg/mL)



For full product information, images and publications, please visit our [website](#).