

## Mycoplasma pneumoniae P1 protein antibody [HL3204]

**Cat. No. GTX640844**

<b>Host</b>	Rabbit
<b>Clonality</b>	Monoclonal
<b>Isotype</b>	IgG
<b>Applications</b>	WB, ELISA, Lateral Flow, Sandwich ELISA
<b>Reactivity</b>	Mycoplasma pneumoniae

**Package**  
100 µl, 25 µl

## Applications

**Application Note**

\*Optimal dilutions/concentrations should be determined by the researcher.

Suggested dilution	Recommended dilution
WB	Assay dependent
ELISA	Assay dependent
Lateral Flow	Assay dependent
Sandwich ELISA	Assay dependent

**Note : Capture : GTX640844 / GTX640845, Detection : GTX640843 or Capture : GTX640843 / GTX640844, Detection : GTX640845**  
Please notice that the detection antibodies need to be conjugated to Gold to function when paired with capture antibodies. Please contact us for custom Gold-conjugated antibody.

**Capture : GTX640844, Detection: GTX640845 or Capture : GTX641378, Detection: GTX640844**

Please notice that the detection antibody needs to be conjugated to HRP to function when paired with capture antibody.

Please contact us for custom HRP-conjugated antibody.

Not tested in other applications.

## Properties

<b>Form</b>	Liquid
<b>Buffer</b>	PBS
<b>Preservative</b>	No preservatives
<b>Storage</b>	Store as concentrated solution. Centrifuge briefly prior to opening vial. For short-term storage (1-2 weeks), store at 4°C. For long-term storage, aliquot and store at -20°C or below. Avoid multiple freeze-thaw cycles.
<b>Concentration</b>	2 mg/ml (Please refer to the vial label for the specific concentration.)
<b>Immunogen</b>	Recombinant fragment of Mycoplasma pneumoniae P1 protein.(strain# ATCC 29342/M129/Subtype 1)
<b>Purification</b>	Affinity purified by Protein A.
<b>Conjugation</b>	Unconjugated

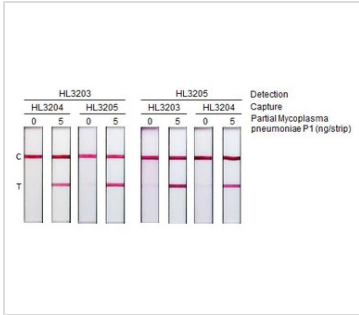


For full product information, images and publications, please visit our [website](#).

For laboratory research use only. Not for any clinical, therapeutic, or diagnostic use in humans or animals. Not for animal or human consumption.

**Note**  
Purchasers shall not, and agree not to enable third parties to, analyze, copy, reverse engineer or otherwise attempt to determine the structure or sequence of the product.

DATA IMAGES



**GTX640844 Lateral Flow Image**

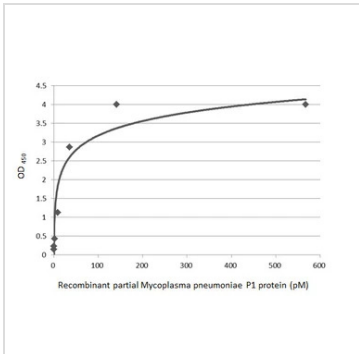
Detection of Mycoplasma pneumoniae P1 protein by lateral flow assay using the indicated recombinant rabbit monoclonal antibodies.

HL3203 : Mycoplasma pneumoniae P1 protein antibody [HL3203] (GTX640843)

HL3204 : Mycoplasma pneumoniae P1 protein antibody [HL3204] (GTX640844)

HL3205 : Mycoplasma pneumoniae P1 protein antibody [HL3205] (GTX640845)

Samples (5 ng) : Recombinant partial Mycoplasma pneumoniae P1 protein



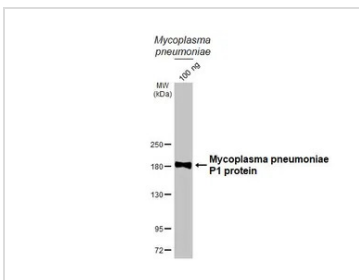
**GTX640844 ELISA Image**

Sandwich ELISA detection of recombinant E.coli expressed, partial Mycoplasma pneumoniae P1 protein using antibodies as below.

**Capture:** Mycoplasma pneumoniae P1 protein antibody [HL3204] (GTX640844) (5 µg/mL)

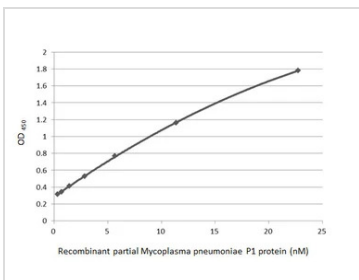
**Detection:** HRP-conjugated Mycoplasma pneumoniae P1 protein antibody [HL3205] (GTX640845) (1 µg/mL)

Please notice that GTX640845 needs to be conjugated to HRP to function as the detection antibody when paired with GTX640844. Please contact us for custom HRP-conjugated antibody.



**GTX640844 WB Image**

Mycoplasma pneumoniae extract (100ng) was separated by 5% SDS-PAGE, and the membrane was blotted with Mycoplasma pneumoniae P1 protein antibody [HL3204] (GTX640844) diluted at 1:2000. The HRP-conjugated anti-rabbit IgG antibody (GTX213110-01) was used to detect the primary antibody.



**GTX640844 ELISA Image**

Sandwich ELISA detection of recombinant E. coli expressed, partial Mycoplasma pneumoniae P1 protein using antibodies as below.

**Capture:** Mycoplasma pneumoniae P1 protein antibody [GT50] (GTX641374) (5 µg/mL)

**Detection:** Mycoplasma pneumoniae P1 protein anti body [HL3204] (GTX640844) (1 µg/mL)



For full product information, images and publications, please visit our [website](#).