

## VGluT1 antibody [HL3210]

Cat. No. GTX640850

Host	Rabbit
Clonality	Monoclonal
Isotype	IgG
Applications	WB, IHC-P
Reactivity	Mouse, Rat

Package  
100 µl, 25 µl

## Applications

## Application Note

\*Optimal dilutions/concentrations should be determined by the researcher.

Suggested dilution	Recommended dilution
WB	1:500-1:3000
IHC-P	Assay dependent

Not tested in other applications.

**Observed MW (kDa)** 45-55 (smear) kDa.

**Product Note** This antibody was raised against mouse VGluT1 Intracellular domain.

## Properties

Form	Liquid
Buffer	PBS
Preservative	No preservative
Storage	Store as concentrated solution. Centrifuge briefly prior to opening vial. For short-term storage (1-2 weeks), store at 4°C. For long-term storage, aliquot and store at -20°C or below. Avoid multiple freeze-thaw cycles.
Concentration	1 mg/ml (Please refer to the vial label for the specific concentration.)
Immunogen	Recombinant protein encompassing a sequence within the Intracellular domain of mouse VGluT1. The exact sequence is proprietary.
Purification	Affinity purified by Protein A.
Conjugation	Unconjugated

## Note

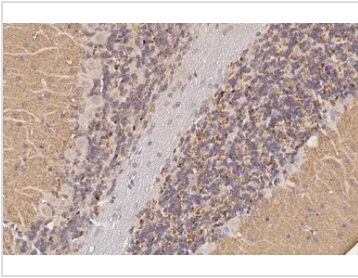
For laboratory research use only. Not for any clinical, therapeutic, or diagnostic use in humans or animals. Not for animal or human consumption.

Purchasers shall not, and agree not to enable third parties to, analyze, copy, reverse engineer or otherwise attempt to determine the structure or sequence of the product.



For full product information, images and publications, please visit our [website](#).

## DATA IMAGES



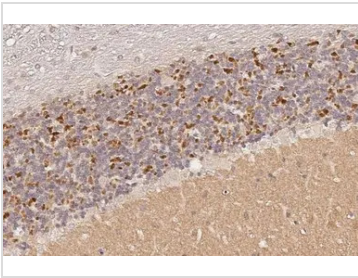
### GTx640850 IHC-P Image

VGLUT1 antibody [HL3210] detects VGLUT1 protein by immunohistochemical analysis.

Sample: Paraffin-embedded mouse cerebellum.

VGLUT1 stained by VGLUT1 antibody [HL3210] (GTx640850) diluted at 1:100.

Antigen Retrieval: Citrate buffer, pH 6.0, 15 min



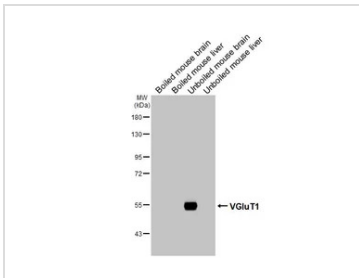
### GTx640850 IHC-P Image

VGLUT1 antibody [HL3210] detects VGLUT1 protein by immunohistochemical analysis.

Sample: Paraffin-embedded rat cerebellum.

VGLUT1 stained by VGLUT1 antibody [HL3210] (GTx640850) diluted at 1:100.

Antigen Retrieval: Citrate buffer, pH 6.0, 15 min



### GTx640850 WB Image

Boiled and unboiled various tissue extracts (50 µg) were separated by 7.5% SDS-PAGE, and the membrane was blotted with VGLUT1 antibody [HL3210] (GTx640850) diluted at 1:1000. The HRP-conjugated anti-rabbit IgG antibody (GTx213110-01) was used to detect the primary antibody.



For full product information, images and publications, please visit our [website](https://www.genetex.com).