

## ATR (phospho Ser428) antibody [HL3246]

**Cat. No. GTX640889**

|                     |              |
|---------------------|--------------|
| <b>Host</b>         | Rabbit       |
| <b>Clonality</b>    | Monoclonal   |
| <b>Isotype</b>      | IgG          |
| <b>Applications</b> | WB, ICC/IF   |
| <b>Reactivity</b>   | Human, Mouse |

**Package**  
100 µl, 25 µl

## Applications

**Application Note**

\*Optimal dilutions/concentrations should be determined by the researcher.

| Suggested dilution | Recommended dilution |
|--------------------|----------------------|
| WB                 | 1:500-1:3000         |
| ICC/IF             | Assay dependent      |

Not tested in other applications.

**Observed MW (kDa)** 260 kDa.

## Properties

|                      |  |
|----------------------|--|
| <b>Form</b>          | Liquid   |
| <b>Buffer</b>        | PBS  |
| <b>Preservative</b>  | No preservatives   |
| <b>Storage</b>       | Store as concentrated solution. Centrifuge briefly prior to opening vial. For short-term storage (1-2 weeks), store at 4°C. For long-term storage, aliquot and store at -20°C or below. Avoid multiple freeze-thaw cycles. |
| <b>Concentration</b> | 1 mg/ml (Please refer to the vial label for the specific concentration.)   |
| <b>Immunogen</b>     | Carrier-protein conjugated synthetic peptide surrounding phospho Ser428 of human ATR. The exact sequence is proprietary.   |
| <b>Purification</b>  | Affinity purified by Protein A.  |
| <b>Conjugation</b>   | Unconjugated   |

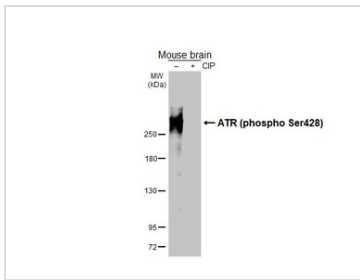
**Note** For laboratory research use only. Not for any clinical, therapeutic, or diagnostic use in humans or animals. Not for animal or human consumption.

Purchasers shall not, and agree not to enable third parties to, analyze, copy, reverse engineer or otherwise attempt to determine the structure or sequence of the product.

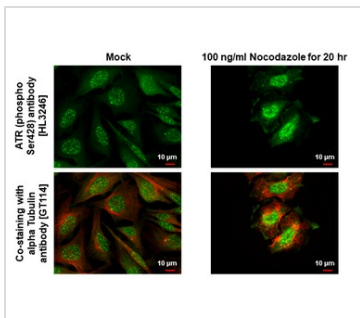


For full product information, images and publications, please visit our [website](#).

## DATA IMAGES

**GTX640889 WB Image**

Untreated (-) and treated (+) mouse tissue extract (50 µg) were separated by 5% SDS-PAGE, and the membrane was blotted with ATR (phospho Ser428) antibody [HL3246] (GTX640889) diluted at 1:2500. The HRP-conjugated anti-rabbit IgG antibody (GTX213110-01) was used to detect the primary antibody.

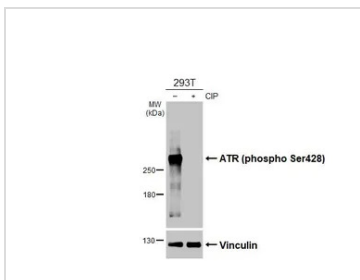
**GTX640889 ICC/IF Image**

ATR (phospho Ser428) antibody [HL3246] detects ATR (phospho Ser428) protein by immunofluorescent analysis.

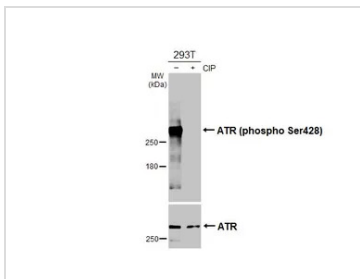
Sample: Mock and treated HeLa cells were fixed in ice-cold MeOH for 5 min.

Green: ATR (phospho Ser428) stained by ATR (phospho Ser428) antibody [HL3246] (GTX640889) diluted at 1:500.

Red: alpha Tubulin, a cytoskeleton marker, stained by alpha Tubulin antibody [GT114] (GTX628802) diluted at 1:1000.

**GTX640889 WB Image**

Untreated (-) and treated (+) 293T whole cell extracts (30 µg) were separated by 5% SDS-PAGE, and the membrane was blotted with ATR (phospho Ser428) antibody [HL3246] (GTX640889) diluted at 1:1000. The HRP-conjugated anti-rabbit IgG antibody (GTX213110-01) was used to detect the primary antibody.

**GTX640889 WB Image**

Untreated (-) and treated (+) 293T whole cell extracts (30 µg) were separated by 5% SDS-PAGE, and the membranes were blotted with ATR (phospho Ser428) antibody [HL3246] (GTX640889) diluted at 1:1000 and ATR antibody (GTX70109) diluted at 1:500. The HRP-conjugated anti-rabbit IgG antibody (GTX213110-01) was used to detect the primary antibody.



For full product information, images and publications, please visit our [website](https://www.genetex.com).