

alpha 1d Adrenergic Receptor antibody [HL3267]

Cat. No. GTX640914

Host	Rabbit
Clonality	Monoclonal
Isotype	IgG
Applications	ICC/IF
Reactivity	Human

Package
100 µl, 25 µl

Applications

Application Note

*Optimal dilutions/concentrations should be determined by the researcher.

Suggested dilution	Recommended dilution
ICC/IF	1:100-1:1000

Not tested in other applications.

Properties

Form	Liquid
Buffer	PBS
Preservative	No preservative
Storage	Store as concentrated solution. Centrifuge briefly prior to opening vial. For short-term storage (1-2 weeks), store at 4°C. For long-term storage, aliquot and store at -20°C or below. Avoid multiple freeze-thaw cycles.
Concentration	1 mg/ml (Please refer to the vial label for the specific concentration.)
Immunogen	Synthetic peptide of human alpha 1d Adrenergic Receptor.
Purification	Affinity purified by Protein A.
Conjugation	Unconjugated

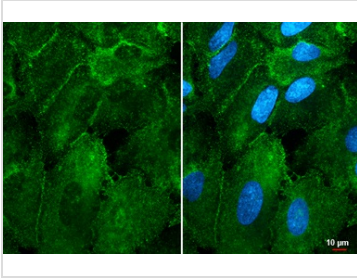
Note

For laboratory research use only. Not for any clinical, therapeutic, or diagnostic use in humans or animals. Not for animal or human consumption.

Purchasers shall not, and agree not to enable third parties to, analyze, copy, reverse engineer or otherwise attempt to determine the structure or sequence of the product.



For full product information, images and publications, please visit our [website](#).

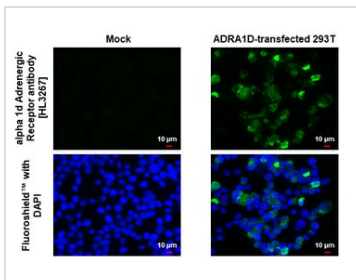
DATA IMAGES

GTX640914 ICC/IF Image

alpha 1d Adrenergic Receptor antibody [HL3267] detects alpha 1d Adrenergic Receptor protein by immunofluorescent analysis.

Sample: A549 cells were fixed in ice-cold MeOH for 5 min.

Green: alpha 1d Adrenergic Receptor stained by alpha 1d Adrenergic Receptor antibody [HL3267] (GTX640914) diluted at 1:500.

Blue: Fluoroshield with DAPI (GTX30920).


GTX640914 ICC/IF Image

alpha 1d Adrenergic Receptor antibody [HL3267] detects alpha 1d Adrenergic Receptor protein by immunofluorescent analysis.

Sample: Mock and transfected 293T cells were fixed in ice-cold MeOH for 5 min.

Green: alpha 1d Adrenergic Receptor stained by alpha 1d Adrenergic Receptor antibody [HL3267] (GTX640914) diluted at 1:500.

Blue: Fluoroshield with DAPI (GTX30920).



For full product information, images and publications, please visit our [website](https://www.genetex.com).