

Ada2 (*S. cerevisiae*) antibody**Cat. No. GTX64096**

Host	Rabbit
Clonality	Polyclonal
Isotype	IgG
Applications	WB
Reactivity	Saccharomyces cerevisiae

Package
100 µl

Applications

Application Note

Western blotting (1:500-1:1000).

Calculated MW 51 kDa. ([Note](#))

Properties

Form	Liquid
Buffer	Serum
Preservative	0.1% Sodium azide
Storage	Store as concentrated solution. Centrifuge briefly prior to opening vial. For short-term storage (1-2 weeks), store at 4°C. For long-term storage, aliquot and store at -20°C or below. Avoid multiple freeze-thaw cycles.
Concentration	Batch dependent (Please refer to the vial label for the specific concentration.)
Immunogen	Recombinant His-tagged Ada2 protein (full-length; 1-434 aa) produced in <i>E. coli</i>
Conjugation	Unconjugated

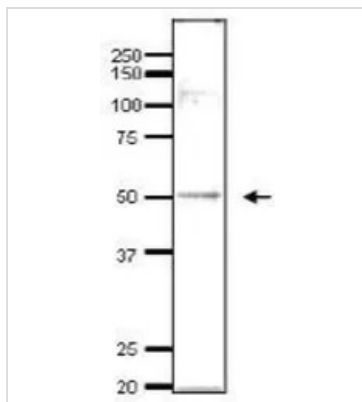
Note

For laboratory research use only. Not for any clinical, therapeutic, or diagnostic use in humans or animals. Not for animal or human consumption.

Purchasers shall not, and agree not to enable third parties to, analyze, copy, reverse engineer or otherwise attempt to determine the structure or sequence of the product.

For full product information, images and publications, please visit our [website](#).

DATA IMAGES



GTX64096 WB Image

Detection of endogenous Ada2 in whole cell extract of *S. cerevisiae* by Western blotting, using the anti-Ada2 antibody. The antibody was used at 1/500 dilution. As second antibody, HRP-conjugated goat anti-rabbit IgG was used at 1/10,000.



For full product information, images and publications, please visit our [website](#).