

Bordetella pertussis Toxin antibody

Cat. No. GTX64098

Host	Rabbit
Clonality	Polyclonal
Isotype	IgG
Applications	WB, IP, Dot, ELISA, Neutralizing/Inhibition
Reactivity	Bordetella pertussis

Package
100 µl

Applications

Application Note

Western blotting (1:2000-1:10000 dilution), ELISA (1:10000-1:20000 dilution), Dot blotting (1:2000-1:10000 dilution), Immunoprecipitation (1:200-1:500 dilution)

Properties

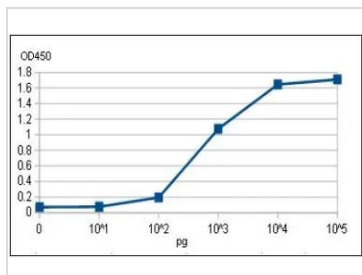
Form	Liquid
Preservative	0.09% Sodium azide
Storage	Store as concentrated solution. Centrifuge briefly prior to opening vial. For short-term storage (1-2 weeks), store at 4°C. For long-term storage, aliquot and store at -20°C or below. Avoid multiple freeze-thaw cycles.
Concentration	Batch dependent (Please refer to the vial label for the specific concentration.)
Immunogen	Immunization was Initiated with toxoid and boosted with native toxin
Conjugation	Unconjugated

Note

For laboratory research use only. Not for any clinical, therapeutic, or diagnostic use in humans or animals. Not for animal or human consumption.

Purchasers shall not, and agree not to enable third parties to, analyze, copy, reverse engineer or otherwise attempt to determine the structure or sequence of the product.

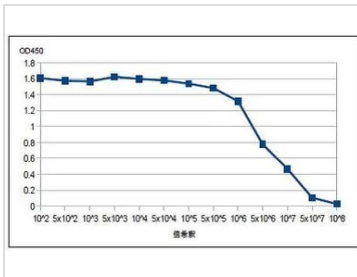
DATA IMAGES

**GTX64098 ELISA Image**

Titration of pertussis toxin by direct ELISA using anti-pertussis toxin antiserum ELISA plate is coated with indicated amounts of pertussis toxin per well. Antiserum was used at 1/12,500 dilution. ELISA was performed as in Fig.2. Dynamic range was 100 pg to 10 ng under these conditions.

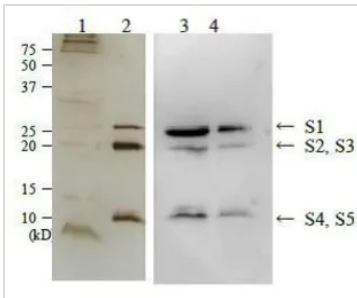


For full product information, images and publications, please visit our [website](#).



GTX64098 ELISA Image

Titration of antibody reactivity of anti-Pertussis antiserum by direct ELISA Plate was coated with 100 µg of pertussis toxin per well and 100 µl of the antiserum at the indicated dilution was added to each well and incubated. After washing, goat anti-rabbit-IgG conjugated with HRP was added as 2nd antibody. Color was developed with TMB as substrate.



GTX64098 WB Image

Detection of pertussis toxin in culture medium of Bordetella pertussis strain Tohama by Western blotting using anti-pertussis toxin antibody. 1. Culture medium of Bordetella pertussis. SDS-PAGE, silver-stained. 2. Purified pertussis toxin (200 ng). SDS-PAGE, silver-stained. 3. Western blot of culture medium of Bordetella pertussis as in 1. 4. Western blot of purified pertussis toxin (10 ng) The toxin consists of five subunits as indicated by S1 to S5.



For full product information, images and publications, please visit our [website](https://www.genetex.com).