

# Cdc22 / RMM1 (S. pombe) antibody

**Cat. No. GTX64099**

<b>Host</b>	Rabbit
<b>Clonality</b>	Polyclonal
<b>Isotype</b>	IgG
<b>Applications</b>	WB
<b>Reactivity</b>	Schizosaccharomyces pombe

**Package**  
100 µg

## Applications

### Application Note

Western blotting (1:1000 dilution).

**Calculated MW** 92 kDa. ( [Note](#) )

## Properties

<b>Form</b>	Liquid
<b>Buffer</b>	Filter-sterilized PBS, 50% Glycerol
<b>Preservative</b>	No preservatives
<b>Storage</b>	Store as concentrated solution. Centrifuge briefly prior to opening vial. For short-term storage (1-2 weeks), store at 4°C. For long-term storage, aliquot and store at -20°C or below. Avoid multiple freeze-thaw cycles.
<b>Concentration</b>	Batch dependent (Please refer to the vial label for the specific concentration.)
<b>Immunogen</b>	Synthetic peptide, NVNPTDLWDWAE-C, corresponding to 571-582 residues of S. pombe Cdc22 protein.
<b>Purification</b>	Affinity purified with the immunogen peptide conjugated with agarose beads.
<b>Conjugation</b>	Unconjugated

### Note

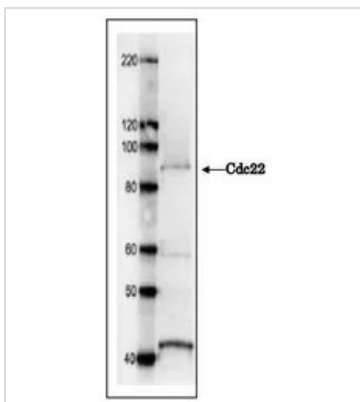
For laboratory research use only. Not for any clinical, therapeutic, or diagnostic use in humans or animals. Not for animal or human consumption.

Purchasers shall not, and agree not to enable third parties to, analyze, copy, reverse engineer or otherwise attempt to determine the structure or sequence of the product.



For full product information, images and publications, please visit our [website](#).

## DATA IMAGES



### GTX64099 WB Image

Western blot analysis with Cdc22 antibody. Cdc22 protein (92 kDa) was detected by western blotting in *S. pombe* crude extract. 7.5 % SDS-PAGE was used. Anti-Cdc22 antibody was used at 1/1,000 dilution and secondary antibody, anti-rabbit IgG conjugated with HRP, was used at 1/10,000 dilution.



For full product information, images and publications, please visit our [website](https://www.genetex.com).