

Cdc22 / RMM1 (S. pombe) antibody

Cat. No. GTX64099

Host	Rabbit
Clonality	Polyclonal
Isotype	IgG
Applications	WB
Reactivity	Schizosaccharomyces pombe

Package
100 µg

Applications

Application Note

Western blotting (1:1000 dilution).

Calculated MW 92 kDa. ([Note](#))

Properties

Form	Liquid
Buffer	Filter-sterilized PBS, 50% Glycerol
Preservative	No preservatives
Storage	Store as concentrated solution. Centrifuge briefly prior to opening vial. For short-term storage (1-2 weeks), store at 4°C. For long-term storage, aliquot and store at -20°C or below. Avoid multiple freeze-thaw cycles.
Concentration	Batch dependent (Please refer to the vial label for the specific concentration.)
Immunogen	Synthetic peptide, NVNPTDLWDWAE-C, corresponding to 571-582 residues of S. pombe Cdc22 protein.
Purification	Affinity purified with the immunogen peptide conjugated with agarose beads.
Conjugation	Unconjugated

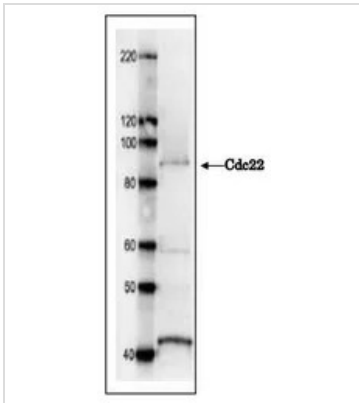
Note

For laboratory research use only. Not for any clinical, therapeutic, or diagnostic use in humans or animals. Not for animal or human consumption.

Purchasers shall not, and agree not to enable third parties to, analyze, copy, reverse engineer or otherwise attempt to determine the structure or sequence of the product.

For full product information, images and publications, please visit our [website](#).

DATA IMAGES

**GTX64099 WB Image**

Western blot analysis with Cdc22 antibody. Cdc22 protein (92 kDa) was detected by western blotting in *S. pombe* crude extract. 7.5 % SDS-PAGE was used. Anti-Cdc22 antibody was used at 1/1,000 dilution and secondary antibody, anti-rabbit IgG conjugated with HRP, was used at 1/10,000 dilution.



For full product information, images and publications, please visit our [website](#).