

CDC37 (S. cerevisiae) antibody

Cat. No. GTX64100

Host	Rabbit
Clonality	Polyclonal
Isotype	IgG
Applications	WB, IP
Reactivity	Saccharomyces cerevisiae

Package
100 µl

Applications

Application Note

Western blotting (2,000 fold dilution)

Calculated MW 58 kDa. ([Note](#))

Properties

Form	Liquid
Buffer	Serum
Preservative	0.09% Sodium azide
Storage	Store as concentrated solution. Centrifuge briefly prior to opening vial. For short-term storage (1-2 weeks), store at 4°C. For long-term storage, aliquot and store at -20°C or below. Avoid multiple freeze-thaw cycles.
Concentration	Batch dependent (Please refer to the vial label for the specific concentration.)
Immunogen	Recombinant yeast Cdc37 expressed in E. coli
Conjugation	Unconjugated

Note

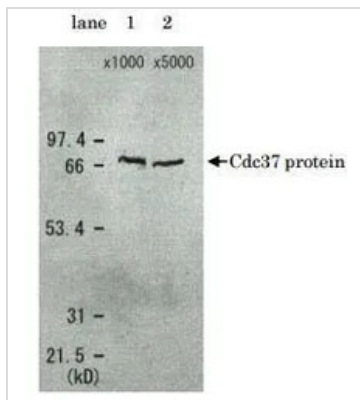
For laboratory research use only. Not for any clinical, therapeutic, or diagnostic use in humans or animals. Not for animal or human consumption.

Purchasers shall not, and agree not to enable third parties to, analyze, copy, reverse engineer or otherwise attempt to determine the structure or sequence of the product.



For full product information, images and publications, please visit our [website](#).

DATA IMAGES



GTX64100 WB Image

Detection of Cdc37 protein in the crude extract of *S. cerevisiae* by Western blotting using this antibody lane 1: x 1000 dilution lane 2: x 5000 dilution Cdc37 protein has a molecular weight of 58.4 kD, but appeared as a 68 kD band in SDS-PAGE.



For full product information, images and publications, please visit our [website](https://www.genetex.com).