

Cdc48 (*S. cerevisiae*) antibody**Cat. No. GTX64101**

Host	Rabbit
Clonality	Polyclonal
Isotype	IgG
Applications	WB
Reactivity	Saccharomyces cerevisiae

Package
100 µl

Applications

Application Note

Western blotting (1:500-1:5,000 dilution).

Calculated MW 92 kDa. ([Note](#))

Properties

Form	Liquid
Buffer	Serum
Preservative	0.02% Sodium azide
Storage	Store as concentrated solution. Centrifuge briefly prior to opening vial. For short-term storage (1-2 weeks), store at 4°C. For long-term storage, aliquot and store at -20°C or below. Avoid multiple freeze-thaw cycles.
Concentration	Batch dependent (Please refer to the vial label for the specific concentration.)
Immunogen	Synthetic peptide HPDQYTKFGLSPSK (509~521) corresponding to 509~521 of Cdc48 protein.
Conjugation	Unconjugated

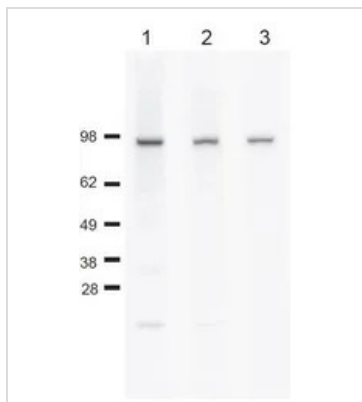
Note

For laboratory research use only. Not for any clinical, therapeutic, or diagnostic use in humans or animals. Not for animal or human consumption.

Purchasers shall not, and agree not to enable third parties to, analyze, copy, reverse engineer or otherwise attempt to determine the structure or sequence of the product.

For full product information, images and publications, please visit our [website](#).

DATA IMAGES



GTX64101 WB Image

Identification of endogenous Cdc48 protein in crude extract of *S. cerevisiae*. Total protein (40 µg) of *S. cerevisiae* strain W303 was analyzed by western blot. 1. Anti-Cdc48 antibody at 1/500. 2. Anti-Cdc48 antibody at 1/2,000. 3. Anti-Cdc48 antibody at 1/5,000. As second antibody, HRP-conjugated anti-rabbit IgG was used at 1/10,000 dilution. Positions of molecular size markers were shown in kDa on the left. Cdc48 calculated from amino acids sequence is 92 kDa.



For full product information, images and publications, please visit our [website](https://www.genetex.com).