

Cut15 (S. pombe) antibody

Cat. No. GTX64103

Host	Rabbit
Clonality	Polyclonal
Isotype	IgG
Applications	WB
Reactivity	Schizosaccharomyces pombe

Package
100 µl

Applications

Application Note

Western blotting (100-1000 fold dilution)

Calculated MW 60 kDa. ([Note](#))

Product Note Reacts with S. pombe Cut15 protein. Not tested in other species.

Properties

Form Liquid

Buffer Serum

Preservative 0.05% Sodium azide

Storage Store as concentrated solution. Centrifuge briefly prior to opening vial. For short-term storage (1-2 weeks), store at 4°C. For long-term storage, aliquot and store at -20°C or below. Avoid multiple freeze-thaw cycles.

Concentration Batch dependent (Please refer to the vial label for the specific concentration.)

Immunogen Purified recombinant GST-fusion protein with full-length Cut15 protein expressed in E.coli.

Conjugation Unconjugated

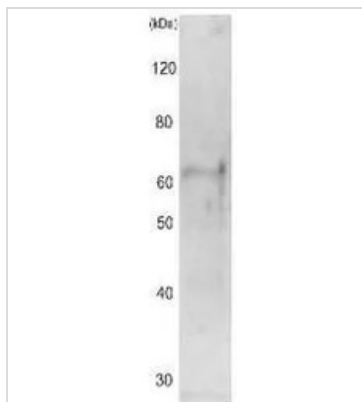
Note For laboratory research use only. Not for any clinical, therapeutic, or diagnostic use in humans or animals. Not for animal or human consumption.

Purchasers shall not, and agree not to enable third parties to, analyze, copy, reverse engineer or otherwise attempt to determine the structure or sequence of the product.



For full product information, images and publications, please visit our [website](#).

DATA IMAGES



GTX64103 WB Image

Identification of Cut15 protein in the crude extracts of *S. pombe* by Western blotting. Samples were prepared by alkali-lysis of the cells by TCA precipitation of protein. *S. pombe* lysate 10 ug. Antibody, 1,000 dilution. Cut15 protein was identified at ~60 kDa position.



For full product information, images and publications, please visit our [website](#).