

## Dis2 (phospho Thr316) (S. pombe) antibody

Cat. No. GTX64105

Host	Rabbit
Clonality	Polyclonal
Isotype	IgG
Applications	WB
Reactivity	Schizosaccharomyces pombe

Package

50 µl

## Applications

## Application Note

Western blotting (1:1,000-1:2,000 dilution).

**Calculated MW** 38 kDa. ( [Note](#) )

**Product Note** Reacts with S. pombe Dis2 protein phosphorylated at Thr316. Not tested with other species

## Properties

**Form** Liquid

**Buffer** Serum

**Preservative** 0.05% Sodium azide

**Storage** Store as concentrated solution. Centrifuge briefly prior to opening vial. For short-term storage (1-2 weeks), store at 4°C. For long-term storage, aliquot and store at -20°C or below. Avoid multiple freeze-thaw cycles.

**Concentration** Batch dependent (Please refer to the vial label for the specific concentration.)

**Immunogen** Synthetic peptide NWHMT(PO3)PPRKN conjugated to KLF

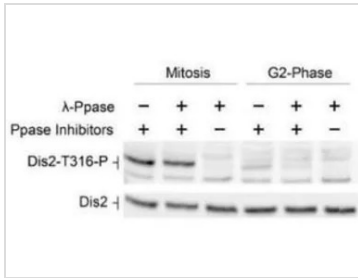
**Conjugation** Unconjugated

**Note** For laboratory research use only. Not for any clinical, therapeutic, or diagnostic use in humans or animals. Not for animal or human consumption.

Purchasers shall not, and agree not to enable third parties to, analyze, copy, reverse engineer or otherwise attempt to determine the structure or sequence of the product.



For full product information, images and publications, please visit our [website](#).

**DATA IMAGES**

**GTX64105 WB Image**

Identification of Dis2 phosphorylated at T316 by western blotting with the antibody. *S. pombe* crude extracts prepared from mitotic and G2-phase were analysed by WB. Dis2 and phosphorylated Dis2 were detected with anti-Dis2 antibody and this antibody (GTX64105), respectively. Phosphorylation is increased in mitosis and sensitive to  $\lambda$ -phosphatase. The antibody was used at 1/1,000 dilution in PBS containing 0.1% Tween and 1% milk. Courtesy of Mr M. Swaffer at Cancer Research UK



For full product information, images and publications, please visit our [website](https://www.genetex.com).