

Dis2 (S. pombe) antibody

Cat. No. GTX64106

Host	Rabbit
Clonality	Polyclonal
Isotype	IgG
Applications	WB, IP
Reactivity	Schizosaccharomyces pombe

Package
100 µl

Applications

Application Note

Immunoblotting (dilution: 1:300-1:1000)

Calculated MW	38 kDa. (Note)
Product Note	Specific to Dis2 and does not cross-react with Sds21

Properties

Form	Liquid
Buffer	Serum
Preservative	0.05% Sodium azide
Storage	Store as concentrated solution. Centrifuge briefly prior to opening vial. For short-term storage (1-2 weeks), store at 4°C. For long-term storage, aliquot and store at -20°C or below. Avoid multiple freeze-thaw cycles.
Concentration	Batch dependent (Please refer to the vial label for the specific concentration.)
Immunogen	Recombinant S. pombe full-length Dis2
Conjugation	Unconjugated

Note

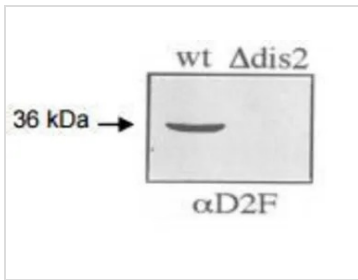
For laboratory research use only. Not for any clinical, therapeutic, or diagnostic use in humans or animals. Not for animal or human consumption.

Purchasers shall not, and agree not to enable third parties to, analyze, copy, reverse engineer or otherwise attempt to determine the structure or sequence of the product.



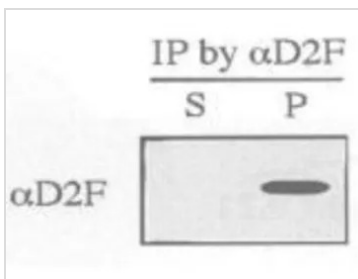
For full product information, images and publications, please visit our [website](#).

DATA IMAGES



GTX64106 WB Image

Immunoblot of wild-type and Δ dis2 S.pombe cells using anti-dis2 antibody, aD2F. wt: wild type dis2: dis2 deletion mutant. (PMID: 8978689)



GTX64106 IP Image

Immunoprecipitation of wild-type S. pombe extracts was performed using anti-dis2 antibody, D2F . Resulting immunoprecipitate (P) and supernatant(S) were immunoblotted by anti-dis2 antibody. (PMID: 8978689)



For full product information, images and publications, please visit our [website](#).