

DIS3 antibody

Cat. No. GTX64107

Host	Rabbit
Clonality	Polyclonal
Isotype	IgG
Applications	WB, ICC/IF
Reactivity	Schizosaccharomyces pombe

Package
100 µl

Applications

Application Note

Western blotting (1:100-1:300 dilution)

Calculated MW 110 kDa. ([Note](#))

Product Note Reacts with S. pombe Dis3 protein. Not tested for other species.

Properties

Form Liquid

Buffer Serum, 50% Glycerol

Preservative 0.05% Sodium azide

Storage Store as concentrated solution. Centrifuge briefly prior to opening vial. For short-term storage (1-2 weeks), store at 4°C. For long-term storage, aliquot and store at -20°C or below. Avoid multiple freeze-thaw cycles.

Concentration Batch dependent (Please refer to the vial label for the specific concentration.)

Immunogen Recombinant truncated Dis3 protein (70 kDa)

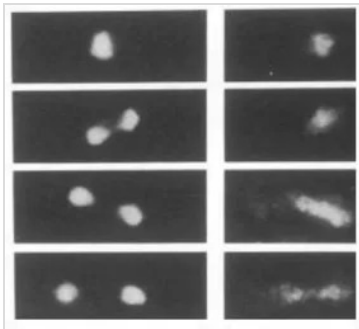
Conjugation Unconjugated

Note For laboratory research use only. Not for any clinical, therapeutic, or diagnostic use in humans or animals. Not for animal or human consumption.

Purchasers shall not, and agree not to enable third parties to, analyze, copy, reverse engineer or otherwise attempt to determine the structure or sequence of the product.

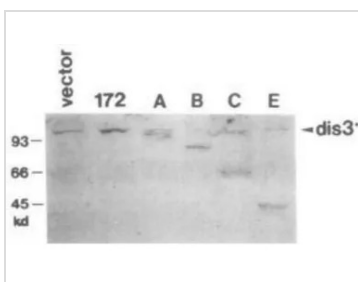
For full product information, images and publications, please visit our [website](#).

DATA IMAGES



GTX64107 ICC/IF Image

Localization of the *dis3+* gene product by immunofluorescence microscopy. *S. pombe* cells were fixed and prepared for immunofluorescence microscopy with anti-*dis3* antibodies. Left, DAPI stain for chromosomal DNA. Right, anti-Dis3 antibody stain (PMID : 1944266).



GTX64107 WB Image

Immunoblotting of extracts of *S. pombe* cells transformed with the vector or plasmids carrying truncated genes (172, A, B, C, E) with anti-Dis3 antibodies. Polypeptides of expected molecular masses were detected (PMID : 1944266).



For full product information, images and publications, please visit our [website](#).