

E. coli LT toxin antibody

Cat. No. GTX64109

Host	Rabbit
Clonality	Polyclonal
Isotype	IgG
Applications	WB, IP
Reactivity	E. coli

Package
100 µl

Applications

Application Note

Western blotting (1:2,000-1:10,000 dilution)

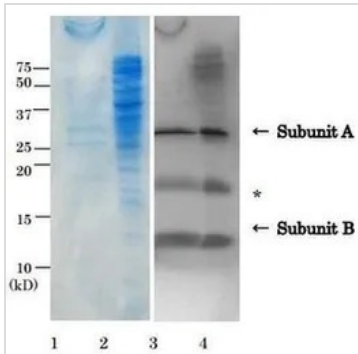
Properties

Form	Liquid
Buffer	Serum
Preservative	0.09% Sodium azide
Storage	Store as concentrated solution. Centrifuge briefly prior to opening vial. For short-term storage (1-2 weeks), store at 4°C. For long-term storage, aliquot and store at -20°C or below. Avoid multiple freeze-thaw cycles.
Concentration	Batch dependent (Please refer to the vial label for the specific concentration.)
Immunogen	Initial immunization with LT toxoid and booster with LT toxin.
Conjugation	Unconjugated
Note	For laboratory research use only. Not for any clinical, therapeutic, or diagnostic use in humans or animals. Not for animal or human consumption. Purchasers shall not, and agree not to enable third parties to, analyze, copy, reverse engineer or otherwise attempt to determine the structure or sequence of the product.



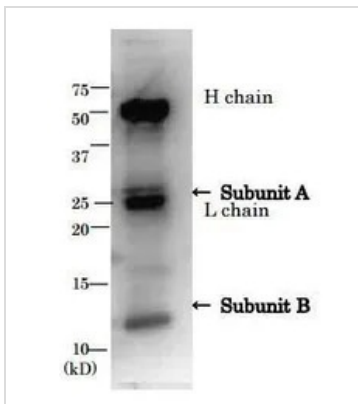
For full product information, images and publications, please visit our [website](#).

DATA IMAGES



GTX64109 WB Image

Detection LT in culture medium and crude extract of ETEC cells by western blotting, using anti-LT antibody. Samples 1. SDS-PAGE of the culture medium of ETEC, CBB stained. 2. SDS-PAGE of the crude extract of ETEC cells, CBB stained. 3. Western Blotting of the culture medium. 4. Western blotting of crude extract of ETEC cells. * Indicates a non-specific protein band.



GTX64109 IP Image

Immunoprecipitation of LT from culture medium of ETEC by using anti-LT antibody H chain and L chain indicate heavy chain and light chain of IgG, respectively.



For full product information, images and publications, please visit our [website](https://www.genetex.com).