

E. coli LT toxin antibody

Cat. No. GTX64109

Host	Rabbit
Clonality	Polyclonal
Isotype	IgG
Applications	WB, IP
Reactivity	E. coli

Package
100 µl

Applications

Application Note

Western blotting (1:2,000-1:10,000 dilution)

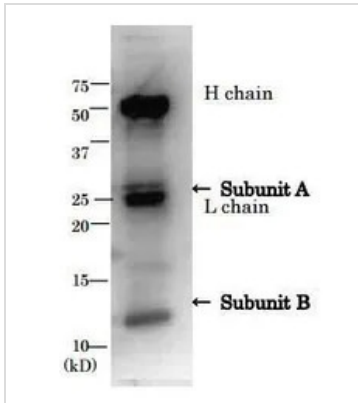
Properties

Form	Liquid
Buffer	Serum
Preservative	0.09% Sodium azide
Storage	Store as concentrated solution. Centrifuge briefly prior to opening vial. For short-term storage (1-2 weeks), store at 4°C. For long-term storage, aliquot and store at -20°C or below. Avoid multiple freeze-thaw cycles.
Concentration	Batch dependent (Please refer to the vial label for the specific concentration.)
Immunogen	Initial immunization with LT toxoid and booster with LT toxin.
Conjugation	Unconjugated
Note	<p>For laboratory research use only. Not for any clinical, therapeutic, or diagnostic use in humans or animals. Not for animal or human consumption.</p> <p>Purchasers shall not, and agree not to enable third parties to, analyze, copy, reverse engineer or otherwise attempt to determine the structure or sequence of the product.</p>



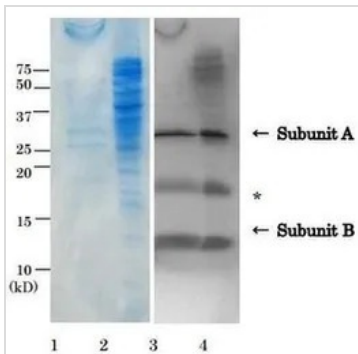
For full product information, images and publications, please visit our [website](#).

DATA IMAGES



GTx64109 IP Image

Immunoprecipitation of LT from culture medium of ETEC by using anti-LT antibody H chain and L chain indicate heavy chain and light chain of IgG, respectively.



GTx64109 WB Image

Detection LT in culture medium and crude extract of ETEC cells by western blotting, using anti-LT antibody. Samples 1. SDS-PAGE of the culture medium of ETEC, CBB stained. 2. SDS-PAGE of the crude extract of ETEC cells, CBB stained. 3. Western Blotting of the culture medium 4. Westerns blotting of crude extract of ETEC cells. * Indicates a non-specific protein band.



For full product information, images and publications, please visit our [website](https://www.genetex.com).