

# Gal 11 (*S. cerevisiae*) antibody

**Cat. No. GTX64110**

<b>Host</b>	Rabbit
<b>Clonality</b>	Polyclonal
<b>Isotype</b>	IgG
<b>Applications</b>	WB
<b>Reactivity</b>	Saccharomyces cerevisiae

**Package**  
100 µl

## Applications

### Application Note

Western blotting (1:500).

**Calculated MW** 120 kDa. ([Note](#))

## Properties

<b>Form</b>	Liquid
<b>Buffer</b>	Serum
<b>Preservative</b>	0.09% Sodium azide
<b>Storage</b>	Store as concentrated solution. Centrifuge briefly prior to opening vial. For short-term storage (1-2 weeks), store at 4°C. For long-term storage, aliquot and store at -20°C or below. Avoid multiple freeze-thaw cycles.
<b>Concentration</b>	Batch dependent (Please refer to the vial label for the specific concentration.)
<b>Immunogen</b>	Recombinant of <i>S. cerevisiae</i> Gal11 protein (1-300aa) expressed in <i>E. coli</i> .
<b>Conjugation</b>	Unconjugated

### Note

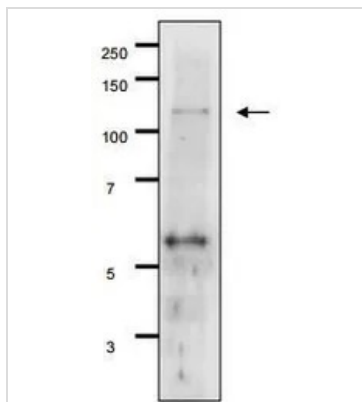
For laboratory research use only. Not for any clinical, therapeutic, or diagnostic use in humans or animals. Not for animal or human consumption.

Purchasers shall not, and agree not to enable third parties to, analyze, copy, reverse engineer or otherwise attempt to determine the structure or sequence of the product.



For full product information, images and publications, please visit our [website](#).

## DATA IMAGES



### GTX64110 WB Image

Detection of Gal11p by Western blotting using the Gal11p antibody in the whole cell extract of *S. cerevisiae*. The antiserum was used at 1/500 dilution. 7.5% gradient gel was used and wet system was used for blotting.



For full product information, images and publications, please visit our [website](#).