

RGR antibody [HL3056 + HL3058]

Cat. No. GTX641102

Host	Rabbit
Clonality	Multiclonal
Isotype	IgG
Applications	IHC-P
Reactivity	Mouse, Rat

Package

100 µl, 25 µl

Applications

Application Note

*Optimal dilutions/concentrations should be determined by the researcher.

Suggested dilution	Recommended dilution
IHC-P	1:100-1:1000

Not tested in other applications.

Product Note This antibody was raised against human RGR Extracellular domain.

Properties

Form	Liquid
Buffer	PBS
Preservative	No preservatives
Storage	Store as concentrated solution. Centrifuge briefly prior to opening vial. For short-term storage (1-2 weeks), store at 4°C. For long-term storage, aliquot and store at -20°C or below. Avoid multiple freeze-thaw cycles.
Concentration	1 mg/ml (Please refer to the vial label for the specific concentration.)
Immunogen	Synthetic peptide encompassing a sequence within the Extracellular domain of human RGR. The exact sequence is proprietary.
Purification	Affinity purified by Protein A.
Conjugation	Unconjugated

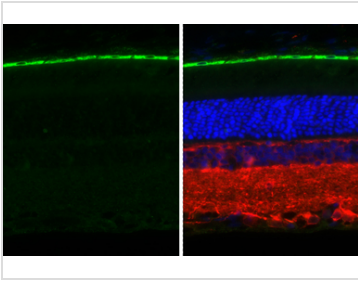
Note

For laboratory research use only. Not for any clinical, therapeutic, or diagnostic use in humans or animals. Not for animal or human consumption.

Purchasers shall not, and agree not to enable third parties to, analyze, copy, reverse engineer or otherwise attempt to determine the structure or sequence of the product.



For full product information, images and publications, please visit our [website](#).

DATA IMAGES

GTX641102 IHC-P Image

RGR antibody [HL3056 + HL3058] detects RGR protein by immunohistochemical analysis.

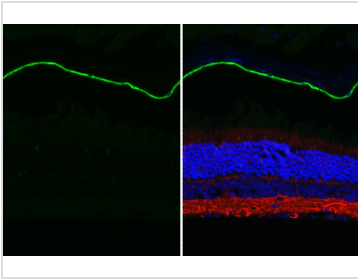
Sample: Paraffin-embedded rat eye.

Green: RGR stained by RGR antibody [HL3056 + HL3058] (GTX641102) diluted at 1:250.

Red: beta Tubulin 3/ Tuj1 antibody (GTX130245) diluted at 1:500.

Blue: Fluoroshield with DAPI (GTX30920).

Antigen Retrieval: Citrate buffer, pH 6.0, 15 min


GTX641102 IHC-P Image

RGR antibody [HL3056 + HL3058] detects RGR protein by immunohistochemical analysis.

Sample: Paraffin-embedded mouse eye.

Green: RGR stained by RGR antibody [HL3056 + HL3058] (GTX641102) diluted at 1:250.

Red: beta Tubulin 3/ Tuj1 antibody (GTX130245) diluted at 1:500.

Blue: Fluoroshield with DAPI (GTX30920).

Antigen Retrieval: Citrate buffer, pH 6.0, 15 min



For full product information, images and publications, please visit our [website](https://www.genetex.com).