

GFAP antibody [GT25]

Cat. No. GTX641104

Host	Mouse
Clonality	Monoclonal
Isotype	IgG2b
Applications	WB, ICC/IF, IHC-P, IHC-Fr
Reactivity	Human, Mouse, Rat

Package
100 µl, 25 µl

Applications

Application Note

*Optimal dilutions/concentrations should be determined by the researcher.

Suggested dilution	Recommended dilution
WB	1:500-1:3000
ICC/IF	Assay dependent
IHC-P	Assay dependent
IHC-Fr	Assay dependent

Note : Antigen retrieval: Both citrate buffer (pH 6.0) and Tris-EDTA (pH9.0) are suitable

Not tested in other applications.

Observed MW (kDa) 43-50 kDa.

Properties

Form	Liquid
Buffer	PBS
Preservative	No preservatives
Storage	Store as concentrated solution. Centrifuge briefly prior to opening vial. For short-term storage (1-2 weeks), store at 4°C. For long-term storage, aliquot and store at -20°C or below. Avoid multiple freeze-thaw cycles.
Concentration	1 mg/ml (Please refer to the vial label for the specific concentration.)
Immunogen	The immunogen used to generate this antibody corresponds to human GFAP.
Purification	Affinity purified by Protein A.
Conjugation	Unconjugated

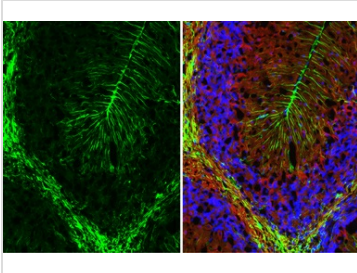


For full product information, images and publications, please visit our [website](#).

For laboratory research use only. Not for any clinical, therapeutic, or diagnostic use in humans or animals. Not for animal or human consumption.

Note

Purchasers shall not, and agree not to enable third parties to, analyze, copy, reverse engineer or otherwise attempt to determine the structure or sequence of the product.

DATA IMAGES

GTX641104 IHC-Fr Image

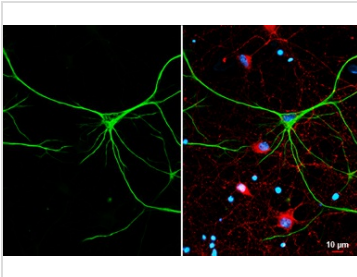
GFAP antibody [GT25] detects GFAP protein by immunohistochemical analysis.

Sample: Frozen-sectioned mouse cerebellum.

Green: GFAP stained by GFAP antibody [GT25] (GTX641104) diluted at 1:250.

Red: beta Tubulin 3/ Tuj1 stained by beta Tubulin 3/ Tuj1 antibody (GTX130245) diluted at 1:250.

Blue: Fluoroshield with DAPI (GTX30920).


GTX641104 ICC/IF Image

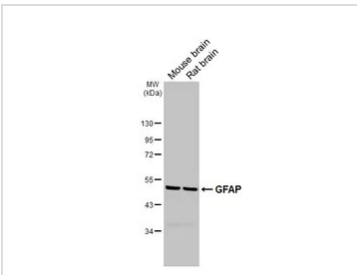
GFAP antibody [GT25] detects GFAP protein by immunofluorescent analysis.

Sample: DIV11 rat E18 hippocampal neurons and glial cells were fixed in 4% paraformaldehyde at RT for 15 min.

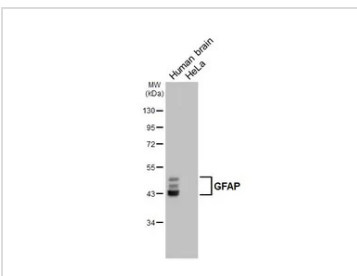
Green: GFAP stained by GFAP antibody [GT25] (GTX641104) diluted at 1:250.

Red: Tau, an axon marker, stained by Tau antibody (GTX130462) diluted at 1:500.

Blue: Fluoroshield with DAPI (GTX30920).


GTX641104 WB Image

Various tissue extracts (50 µg) were separated by 10% SDS-PAGE, and the membrane was blotted with GFAP antibody (GTX641104) diluted at 1:1000. The HRP-conjugated anti-mouse IgG antibody (GTX213111-01) was used to detect the primary antibody.


GTX641104 WB Image

Human tissue and whole cell extracts were separated by 10% SDS-PAGE, and the membrane was blotted with GFAP antibody [GT25] (GTX641104) diluted at 1:1000. The HRP-conjugated anti-mouse IgG antibody (GTX213111-01) was used to detect the primary antibody.



For full product information, images and publications, please visit our [website](https://www.genetex.com).