

Gtr2 (*S. cerevisiae*) antibody**Cat. No. GTX64112**

| | |
|---------------------|--------------------------|
| Host | Rabbit |
| Clonality | Polyclonal |
| Isotype | IgG |
| Applications | WB |
| Reactivity | Saccharomyces cerevisiae |

Package
100 µl

Applications

Application Note

Western blotting (500-2,000 folds dilution)

Calculated MW 39 kDa. ([Note](#))

Properties

| | |
|----------------------|----------------------------------------------------------------------------------------------------------------------------------------------------------------------------------------------------------------------------|
| Form | Liquid |
| Buffer | Serum |
| Preservative | 0.05% Sodium azide |
| Storage | Store as concentrated solution. Centrifuge briefly prior to opening vial. For short-term storage (1-2 weeks), store at 4°C. For long-term storage, aliquot and store at -20°C or below. Avoid multiple freeze-thaw cycles. |
| Concentration | Batch dependent (Please refer to the vial label for the specific concentration.) |
| Immunogen | Purified Full-length yeast Gtr2 protein fused with GST |
| Conjugation | Unconjugated |

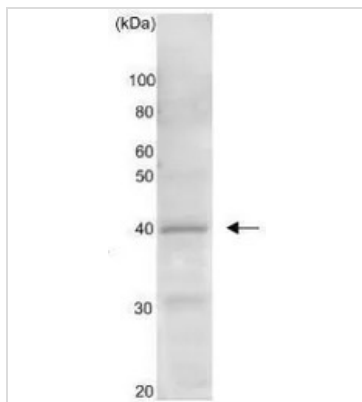
Note

For laboratory research use only. Not for any clinical, therapeutic, or diagnostic use in humans or animals. Not for animal or human consumption.

Purchasers shall not, and agree not to enable third parties to, analyze, copy, reverse engineer or otherwise attempt to determine the structure or sequence of the product.

For full product information, images and publications, please visit our [website](#).

DATA IMAGES



GTx64112 WB Image

Western blot analysis of Gtr2 protein in the whole cell extract of *S. cerevisiae* (10 mg). AntiGtr2 antibody was used at 1/ 1,000 dilution.



For full product information, images and publications, please visit our [website](#).