

## Hepatitis C virus NS4A protein antibody [S4-13] (Biotin)

**Cat. No. GTX64117**

<b>Host</b>	Mouse
<b>Clonality</b>	Monoclonal
<b>Isotype</b>	IgG2b
<b>Applications</b>	WB, ICC/IF, ELISA
<b>Reactivity</b>	Hepatitis C virus

**Package**  
50 µg

## Applications

**Application Note**

\*Optimal dilutions/concentrations should be determined by the researcher.

Suggested dilution	Recommended dilution
WB	Assay dependent
ICC/IF	Assay dependent
ELISA	Assay dependent

Not tested in other applications.

**Product Note** Specific to human HCV NS4a protein of genotype 1b. It does not react with genotypes 1a, and 2a.

## Properties

<b>Form</b>	Liquid
<b>Buffer</b>	Filter-sterilized PBS, 50% Glycerol
<b>Preservative</b>	No preservatives
<b>Storage</b>	Store as concentrated solution. Centrifuge briefly prior to opening vial. For short-term storage (1-2 weeks), store at 4°C. For long-term storage, aliquot and store at -20°C or below. Avoid multiple freeze-thaw cycles.
<b>Concentration</b>	Batch dependent (Please refer to the vial label for the specific concentration.)
<b>Immunogen</b>	A region of NS4 protein of HCV genotype 1b expressed in E. coli. The epitope of this antibody was mapped to the N-terminal region of the NS4 protein (NS4a).
<b>Conjugation</b>	Biotin

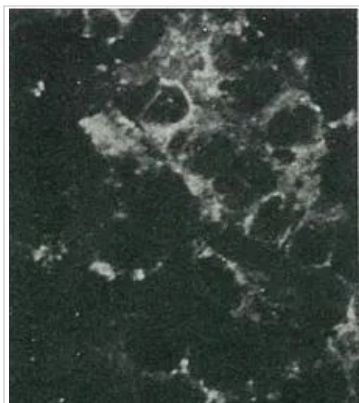
**Note** For laboratory research use only. Not for any clinical, therapeutic, or diagnostic use in humans or animals. Not for animal or human consumption.

Purchasers shall not, and agree not to enable third parties to, analyze, copy, reverse engineer or otherwise attempt to determine the structure or sequence of the product.

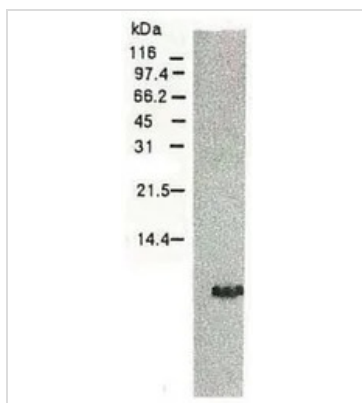


For full product information, images and publications, please visit our [website](#).

## DATA IMAGES

**GTX64117 ICC/IF Image**

Detection of HCV NS4a protein by immuno- fluorescence antibody staining. Chimp liver cells were infected with recombinant vaccinia virus containing a HCV genome cDNA. After incubation for 48 hr, the cells were fixed with acetone and HCV NS4a protein was detected by indirect immunofluorescence staining using this antibody.

**GTX64117 WB Image**

Western blotting of HCV NS4a protein. Chimp liver cells were infected with recombinant vaccinia virus containing a HCV genome cDNA and were subjected to Western blotting using anti-NS4a antibody. The protein detected with this antibody is 6 kD. This small NS4 protein (NS4a) was produced from the N-terminal region of the NS4 protein.



For full product information, images and publications, please visit our [website](#).