

PGP9.5 antibody [HL3391]

Cat. No. GTX641211

Host	Rabbit
Clonality	Monoclonal
Isotype	IgG
Applications	WB, IHC-P, IHC-Fr
Reactivity	Human, Mouse, Rat

Package
100 µl, 25 µl

Applications

Application Note

*Optimal dilutions/concentrations should be determined by the researcher.

Suggested dilution	Recommended dilution
WB	Assay dependent
IHC-P	Assay dependent
IHC-Fr	Assay dependent

Not tested in other applications.

Observed MW (kDa) 25 kDa.

Product Note This antibody may not be suitable for rat IHC-P assay, as its rat reactivity is based on WB testing.

Properties

Form	Liquid
Buffer	PBS
Preservative	No preservatives
Storage	Store as concentrated solution. Centrifuge briefly prior to opening vial. For short-term storage (1-2 weeks), store at 4°C. For long-term storage, aliquot and store at -20°C or below. Avoid multiple freeze-thaw cycles.
Concentration	1 mg/ml
Immunogen	Synthetic peptide of human PGP9.5.
Purification	Affinity purified by Protein A.
Conjugation	Unconjugated

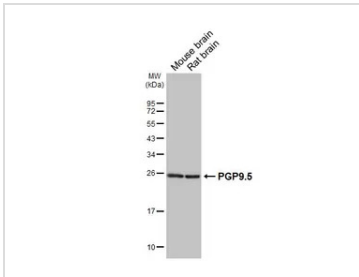


For full product information, images and publications, please visit our [website](#).

For laboratory research use only. Not for any clinical, therapeutic, or diagnostic use in humans or animals. Not for animal or human consumption.

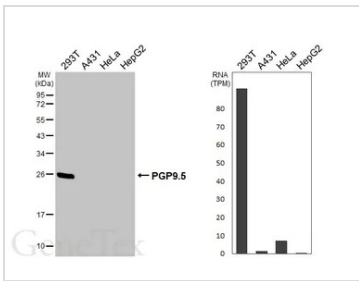
Note
 Purchasers shall not, and agree not to enable third parties to, analyze, copy, reverse engineer or otherwise attempt to determine the structure or sequence of the product.

DATA IMAGES



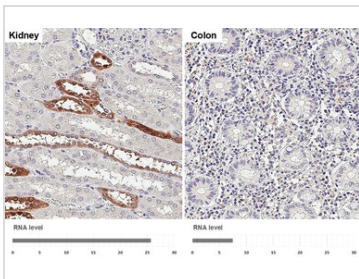
GTX641211 WB Image

Various tissue extracts (50 µg) were separated by 12% SDS-PAGE, and the membrane was blotted with PGP9.5 antibody [HL3391] (GTX641211) diluted at 1:1000. The HRP-conjugated anti-rabbit IgG antibody (GTX213110-01) was used to detect the primary antibody.



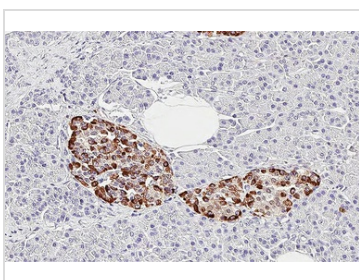
GTX641211 WB Image

Various whole cell extracts (30 µg) were separated by 12% SDS-PAGE, and the membrane was blotted with PGP9.5 antibody [HL3391] (GTX641211) diluted at 1:1000. The HRP-conjugated anti-rabbit IgG antibody (GTX213110-01) was used to detect the primary antibody. Corresponding RNA expression data for the same cell lines are based on Human Protein Atlas program.



GTX641211 IHC-P Image

PGP9.5 antibody [HL3391] detects PGP9.5 protein by immunohistochemical analysis. Sample: Paraffin-embedded human tissues. PGP9.5 stained by PGP9.5 antibody [HL3391] (GTX641211) diluted at 1:1000. Antigen Retrieval: Citrate buffer, pH 6.0, 15 min. Corresponding RNA levels (RPKM) in the tissues are based on NCBI database.



GTX641211 IHC-P Image

PGP9.5 antibody [HL3391] detects PGP9.5 protein by immunohistochemical analysis. Sample: Paraffin-embedded human pancreas. PGP9.5 stained by PGP9.5 antibody [HL3391] (GTX641211) diluted at 1:1000. Antigen Retrieval: Citrate buffer, pH 6.0, 15 min.



For full product information, images and publications, please visit our [website](#).