

# Histone H2B (S. pombe) antibody

**Cat. No. GTX64122**

<b>Host</b>	Rabbit
<b>Clonality</b>	Polyclonal
<b>Isotype</b>	IgG
<b>Applications</b>	WB, IP, ChIP assay
<b>Reactivity</b>	Schizosaccharomyces pombe

[References \( 1 \)](#)

[Package](#)

50 µl

## Applications

### Application Note

Western blotting (1,000 fold dilution)

**Calculated MW** 14 kDa. ( [Note](#) )

## Properties

<b>Form</b>	Liquid
<b>Buffer</b>	Serum
<b>Preservative</b>	0.05% Sodium azide
<b>Storage</b>	Store as concentrated solution. Centrifuge briefly prior to opening vial. For short-term storage (1-2 weeks), store at 4°C. For long-term storage, aliquot and store at -20°C or below. Avoid multiple freeze-thaw cycles.
<b>Concentration</b>	Batch dependent (Please refer to the vial label for the specific concentration.)
<b>Immunogen</b>	Histone H2B (S. pombe)
<b>Conjugation</b>	Unconjugated

### Note

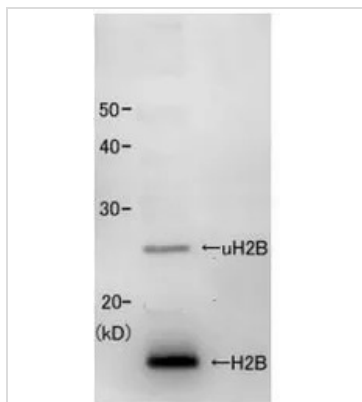
For laboratory research use only. Not for any clinical, therapeutic, or diagnostic use in humans or animals. Not for animal or human consumption.

Purchasers shall not, and agree not to enable third parties to, analyze, copy, reverse engineer or otherwise attempt to determine the structure or sequence of the product.



For full product information, images and publications, please visit our [website](#).

## DATA IMAGES



### GTX64122 WB Image

Identification of histone H2B in the crude extract of fission yeast *S. pombe* with this anti body The 17 kDa and 24~25 kDa bands correspond to the unmodified and the mono-ubiquitinated histone H2B, respectively.



For full product information, images and publications, please visit our [website](#).