

# HIV1 Nef antibody

**Cat. No. GTX64124**

|                     |  |
|---------------------|--|
| <b>Host</b>         | Guinea pig   |
| <b>Clonality</b>    | Polyclonal   |
| <b>Isotype</b>      | IgG  |
| <b>Applications</b> | WB, IP, Dot, ELISA   |
| <b>Reactivity</b>   | Human Immunodeficiency virus 1, Human Immunodeficiency virus |

**Package**  
100 µl

## Applications

### Application Note

Western blot (1:1,000-1:3,000), Dot blot (1:3000)

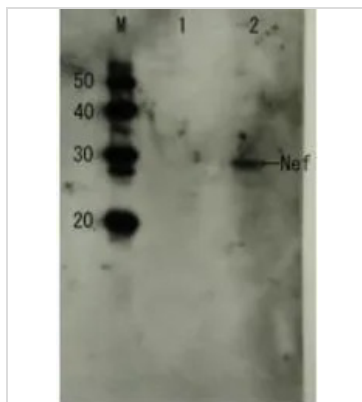
## Properties

|                      |  |
|----------------------|--|
| <b>Form</b>          | Liquid   |
| <b>Buffer</b>        | Serum  |
| <b>Preservative</b>  | 0.09% Sodium azide   |
| <b>Storage</b>       | Store as concentrated solution. Centrifuge briefly prior to opening vial. For short-term storage (1-2 weeks), store at 4°C. For long-term storage, aliquot and store at -20°C or below. Avoid multiple freeze-thaw cycles.   |
| <b>Concentration</b> | Batch dependent (Please refer to the vial label for the specific concentration.)   |
| <b>Immunogen</b>     | Purified full-size recombinant Nef of HIV-1 group M, subtype B expressed in E. coli.   |
| <b>Conjugation</b>   | Unconjugated   |
| <b>Note</b>          | For laboratory research use only. Not for any clinical, therapeutic, or diagnostic use in humans or animals. Not for animal or human consumption.<br><br>Purchasers shall not, and agree not to enable third parties to, analyze, copy, reverse engineer or otherwise attempt to determine the structure or sequence of the product. |



For full product information, images and publications, please visit our [website](#).

## DATA IMAGES



### GTX64124 WB Image

Detection of HIV-1 Nef by Western blotting Lane1: Extract of MT4 cells Lane2: Extract of MT4 cells infected with HIV-1 (LAI strain) The antiserum was diluted 1,000 fold before use. Nef protein band is identified at 27 kDa position



For full product information, images and publications, please visit our [website](https://www.genetex.com).