

DLK/MAP3K12 antibody [HL3423]

Cat. No. GTX641265

| | |
|---------------------|-------------------|
| Host | Rabbit |
| Clonality | Monoclonal |
| Isotype | IgG |
| Applications | WB, ICC/IF, IHC-P |
| Reactivity | Mouse, Rat |

Package
100 µl, 25 µl

Applications

Application Note

*Optimal dilutions/concentrations should be determined by the researcher.

| Suggested dilution | Recommended dilution |
|--------------------|----------------------|
| WB | 1:500-1:3000 |
| ICC/IF | Assay dependent |
| IHC-P | Assay dependent |

Not tested in other applications.

Observed MW (kDa) 125 kDa.

Properties

Form Liquid

Buffer PBS

Preservative No preservatives

Storage Store as concentrated solution. Centrifuge briefly prior to opening vial. For short-term storage (1-2 weeks), store at 4°C. For long-term storage, aliquot and store at -20°C or below. Avoid multiple freeze-thaw cycles.

Concentration 1 mg/ml (Please refer to the vial label for the specific concentration.)

Immunogen Recombinant fragment of human DLK/MAP3K12.

Purification Affinity purified by Protein A.

Conjugation Unconjugated

Note

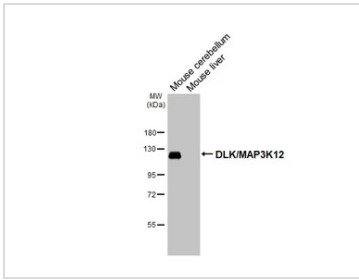
For laboratory research use only. Not for any clinical, therapeutic, or diagnostic use in humans or animals. Not for animal or human consumption.

Purchasers shall not, and agree not to enable third parties to, analyze, copy, reverse engineer or otherwise attempt to determine the structure or sequence of the product.



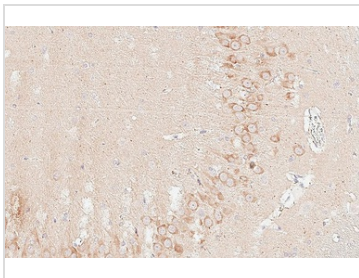
For full product information, images and publications, please visit our [website](#).

DATA IMAGES



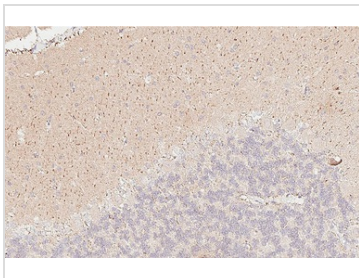
GTX641265 WB Image

Various tissue extracts (50 µg) were separated by 7.5% SDS-PAGE, and the membrane was blotted with DLK/MAP3K12 antibody [HL3423] (GTX641265) diluted at 1:1000. The HRP-conjugated anti-rabbit IgG antibody (GTX213110-01) was used to detect the primary antibody.



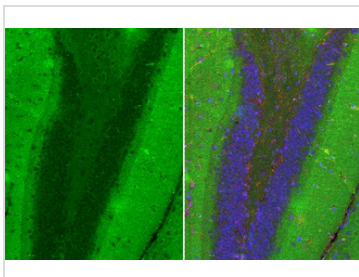
GTX641265 IHC-P Image

DLK/MAP3K12 antibody [HL3423] detects DLK/MAP3K12 protein by immunohistochemical analysis. Sample: Paraffin-embedded rat hippocampus. DLK/MAP3K12 stained by DLK/MAP3K12 antibody [HL3423] (GTX641265) diluted at 1:100. Antigen Retrieval: Tris-EDTA buffer, pH 9.0, 15 min



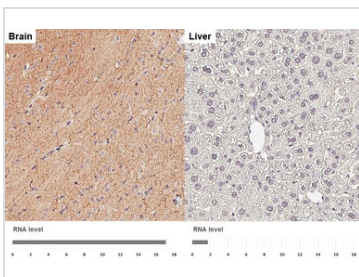
GTX641265 IHC-P Image

DLK/MAP3K12 antibody [HL3423] detects DLK/MAP3K12 protein by immunohistochemical analysis. Sample: Paraffin-embedded rat cerebellum. DLK/MAP3K12 stained by DLK/MAP3K12 antibody [HL3423] (GTX641265) diluted at 1:100. Antigen Retrieval: Tris-EDTA buffer, pH 9.0, 15 min



GTX641265 IHC-P Image

DLK/MAP3K12 antibody [HL3423] detects DLK/MAP3K12 protein by immunohistochemical analysis. Sample: Paraffin-embedded mouse hippocampus. Green: DLK/MAP3K12 stained by DLK/MAP3K12 antibody [HL3423] (GTX641265) diluted at 1:200. Red: NF-H antibody [GT114] (GTX634289) diluted at 1:500. Blue: Hoechst 33342 staining. Antigen Retrieval: Tris-EDTA buffer, pH 9.0, 15 min



GTX641265 IHC-P Image

DLK/MAP3K12 antibody [HL3423] detects DLK/MAP3K12 protein by immunohistochemical analysis. Sample: Paraffin-embedded mouse tissues. DLK/MAP3K12 stained by DLK/MAP3K12 antibody [HL3423] (GTX641265) diluted at 1:200. Antigen Retrieval: Tris-EDTA buffer, pH 9.0, 15 min. Corresponding RNA levels (RPKM) in the tissues are based on NCBI database.



For full product information, images and publications, please visit our [website](#).