

HIV1 p24 antibody

Cat. No. GTX64128

Host	Rabbit
Clonality	Polyclonal
Isotype	IgG
Applications	WB, IP, Dot, ELISA
Reactivity	Human Immunodeficiency virus 1, Human Immunodeficiency virus

References (1)

Package

100 µl

Applications

Application Note

Western blot (1:2,000-1:5,000), Dot blot (1:3,000)

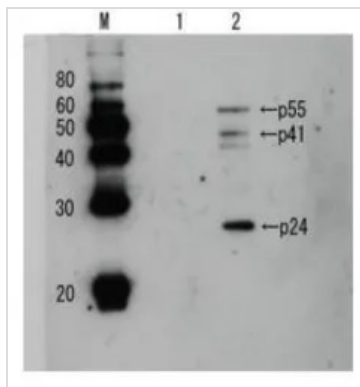
Properties

Form	Liquid
Buffer	Serum
Preservative	0.09% Sodium azide
Storage	Store as concentrated solution. Centrifuge briefly prior to opening vial. For short-term storage (1-2 weeks), store at 4°C. For long-term storage, aliquot and store at -20°C or below. Avoid multiple freeze-thaw cycles.
Concentration	Batch dependent (Please refer to the vial label for the specific concentration.)
Immunogen	Purified full-size recombinant Gag p24 of HIV-1 subtype B expressed in E. coli
Conjugation	Unconjugated
Note	<p>For laboratory research use only. Not for any clinical, therapeutic, or diagnostic use in humans or animals. Not for animal or human consumption.</p> <p>Purchasers shall not, and agree not to enable third parties to, analyze, copy, reverse engineer or otherwise attempt to determine the structure or sequence of the product.</p>



For full product information, images and publications, please visit our [website](#).

DATA IMAGES



GTX64128 WB Image

Detection of HIV-1 p24 and precursor proteins p55 and p41 by Western blotting using the anti p24 antibody Lane 1: Extract of MT4 cells Lane2: Extract of MT4 cells infected with HIV-1(LAI strain) The antiserum was diluted 2,500 fold The upper bands are precursors of p55 of p24 and the processed intermediate proteins.



For full product information, images and publications, please visit our [website](#).