

# HIV1 p24 antibody (Biotin)

**Cat. No. GTX64130**

<b>Host</b>	Rabbit
<b>Clonality</b>	Polyclonal
<b>Isotype</b>	IgG
<b>Applications</b>	WB, ICC/IF, IP, ELISA
<b>Reactivity</b>	Human Immunodeficiency virus 1, Human Immunodeficiency virus

References ( 1 )

Package

100 µg

## Applications

### Application Note

\*Optimal dilutions/concentrations should be determined by the researcher.

Suggested dilution	Recommended dilution
WB	Assay dependent
ICC/IF	Assay dependent
IP	Assay dependent
ELISA	Assay dependent

Not tested in other applications.

## Properties

<b>Form</b>	Liquid
<b>Buffer</b>	Filter-sterilized PBS, 50% Glycerol
<b>Preservative</b>	No preservatives
<b>Storage</b>	Store as concentrated solution. Centrifuge briefly prior to opening vial. For short-term storage (1-2 weeks), store at 4°C. For long-term storage, aliquot and store at -20°C or below. Avoid multiple freeze-thaw cycles.
<b>Concentration</b>	Batch dependent (Please refer to the vial label for the specific concentration.)
<b>Immunogen</b>	HIV1 p24
<b>Conjugation</b>	Biotin

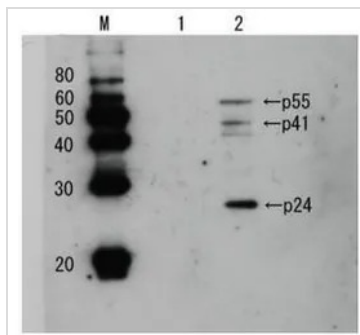
### Note

For laboratory research use only. Not for any clinical, therapeutic, or diagnostic use in humans or animals. Not for animal or human consumption.

Purchasers shall not, and agree not to enable third parties to, analyze, copy, reverse engineer or otherwise attempt to determine the structure or sequence of the product.



For full product information, images and publications, please visit our [website](#).

**DATA IMAGES**

**GTX64130 WB Image**

Detection of HIV-1 p24 and precursor proteins p55 and p41 by Western blotting using the anti p24 antibody (unconjugated)). Lane 1: Extract of MT4 cells Lane2: Extract of MT4 cells infected with HIV-1(LAI strain). Various precursors of p24 are also detected. The antiserum was diluted 2,500 fold before use



For full product information, images and publications, please visit our [website](https://www.genetex.com).