

HIV1 protease antibody

Cat. No. GTX64132

Host	Rabbit
Clonality	Polyclonal
Isotype	IgG
Applications	WB, IP, Dot, ELISA, Neutralizing/Inhibition
Reactivity	Human Immunodeficiency virus 1, Human Immunodeficiency virus

Package
100 µl

Applications

Application Note

Western blotting (1:2,000), Dot blotting (1:2,000), Immunoprecipitation (1:200), ELISA. (1:10,000)

Properties

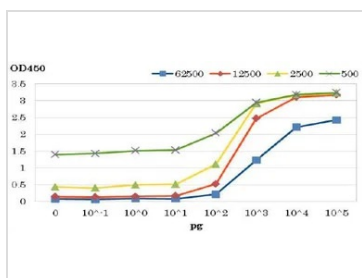
Form	Liquid
Buffer	Serum
Preservative	0.09% Sodium azide
Storage	Store as concentrated solution. Centrifuge briefly prior to opening vial. For short-term storage (1-2 weeks), store at 4°C. For long-term storage, aliquot and store at -20°C or below. Avoid multiple freeze-thaw cycles.
Concentration	Batch dependent (Please refer to the vial label for the specific concentration.)
Immunogen	Full-size functional recombinant HIV-1 protease expressed and purified from E. coli
Conjugation	Unconjugated

Note

For laboratory research use only. Not for any clinical, therapeutic, or diagnostic use in humans or animals. Not for animal or human consumption.

Purchasers shall not, and agree not to enable third parties to, analyze, copy, reverse engineer or otherwise attempt to determine the structure or sequence of the product.

DATA IMAGES

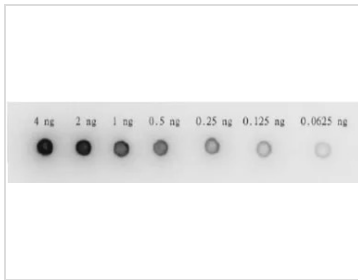


GTX64132 ELISA Image

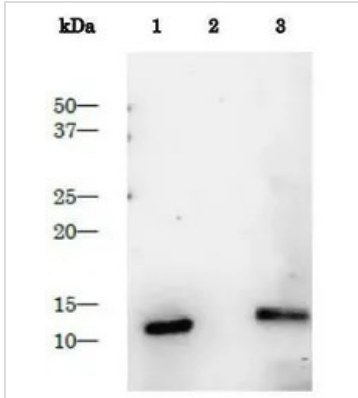
ELISA of HIV-1 protease with anti-HIV-1 protease antibody. The antibody was used at dilutions indicated above. Purified Protease was spotted on wells.



For full product information, images and publications, please visit our [website](http://www.genetex.com).


GTX64132 Dot Image

Dot blotting of HIV-1 protease by using anti-HIV-1 protease antibody Anti-HIV-1 protease antibody was used at 1/2,000 dilution. As second antibody, goat anti-rabbit IgG antibody conjugated with HRP was used at 1/5,000 dilution. ECL system was used.


GTX64132 WB Image

Detection of HIV-1 proteinase in the extract of HIV-1 infected cells by Western blotting using anti-HIV-1 protease antibody. 1: Purified HIV-1 protease (1 ng) 2: Extract of MT4 cells 3.: Extract of MT4 cells infected with HIV-1 (LAI strain) The antiserum was used at 1/2,000 dilution.



For full product information, images and publications, please visit our [website](https://www.genetex.com).