

## HIV1 Reverse transcriptase antibody

**Cat. No. GTX64133**

<b>Host</b>	Rabbit
<b>Clonality</b>	Polyclonal
<b>Isotype</b>	IgG
<b>Applications</b>	WB, IP, Dot, ELISA
<b>Reactivity</b>	Human Immunodeficiency virus 1, Human Immunodeficiency virus

**Package**  
100 µl

## Applications

**Application Note**

\*Optimal dilutions/concentrations should be determined by the researcher.

Suggested dilution	Recommended dilution
WB	Assay dependent
IP	Assay dependent
Dot	Assay dependent
ELISA	Assay dependent

Not tested in other applications.

## Properties

<b>Form</b>	Liquid
<b>Buffer</b>	Serum
<b>Preservative</b>	0.09% Sodium azide
<b>Storage</b>	Store as concentrated solution. Centrifuge briefly prior to opening vial. For short-term storage (1-2 weeks), store at 4°C. For long-term storage, aliquot and store at -20°C or below. Avoid multiple freeze-thaw cycles.
<b>Concentration</b>	Batch dependent (Please refer to the vial label for the specific concentration.)
<b>Immunogen</b>	Full-size functional recombinant HIV-1 expressed and purified from E. coli
<b>Conjugation</b>	Unconjugated

**Note**

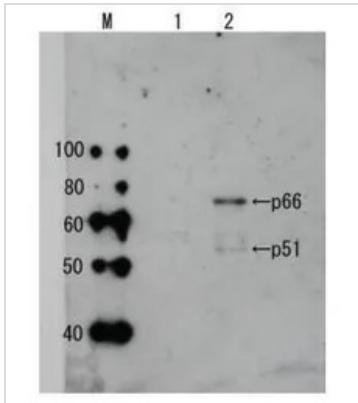
For laboratory research use only. Not for any clinical, therapeutic, or diagnostic use in humans or animals. Not for animal or human consumption.

Purchasers shall not, and agree not to enable third parties to, analyze, copy, reverse engineer or otherwise attempt to determine the structure or sequence of the product.



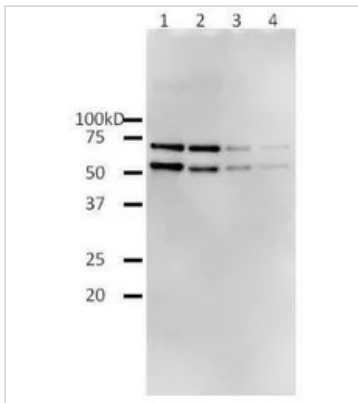
For full product information, images and publications, please visit our [website](#).

## DATA IMAGES



### GTx64133 WB Image

Detection of HIV-1 reverse transcriptase in the extract of HIV-1 infected cells by Western blotting using anti-HIV transcriptase antibody. Lane 1: Extract of MT4 cells Lane 2: Extract of MT4 cells infected with HIV-1 (LAI strain) The antiserum was diluted 2,500 fold before use.



### GTx64133 WB Image

Western blotting of functional recombinant full-length HIV-1 reverse transcriptase by using anti-HIV-1 Reverse Transcriptase antibody. lane 1: 40 ng/lane 2: 20 ng/lane 3: 4 ng/lane 4: 2 ng/lane Anti-HIV-1 RT antibody was used at 1/2,000 dilution. As second antibody, goat anti-rabbit IgG antibody conjugated with HRP was used at 1/5,000 dilution. ECL system was used.



For full product information, images and publications, please visit our [website](https://www.genetex.com).