

## LRRK2 antibody [GT48]

Cat. No. GTX641333

Host	Mouse
Clonality	Monoclonal
Isotype	IgG2b
Applications	WB, IHC-Fr
Reactivity	Mouse, Rat

Package  
100 µl, 25 µl

## Applications

## Application Note

\*Optimal dilutions/concentrations should be determined by the researcher.

Suggested dilution	Recommended dilution
WB	1:500-1:3000
IHC-Fr	1:100-1:1000

Not tested in other applications.

Observed MW (kDa) 260 kDa.

## Properties

Form	Liquid
Buffer	PBS
Preservative	No preservatives
Storage	Store as concentrated solution. Centrifuge briefly prior to opening vial. For short-term storage (1-2 weeks), store at 4°C. For long-term storage, aliquot and store at -20°C or below. Avoid multiple freeze-thaw cycles.
Concentration	1 mg/ml (Please refer to the vial label for the specific concentration.)
Immunogen	The immunogen used to generate this antibody corresponds to human LRRK2.
Purification	Affinity purified by Protein A.
Conjugation	Unconjugated

## Note

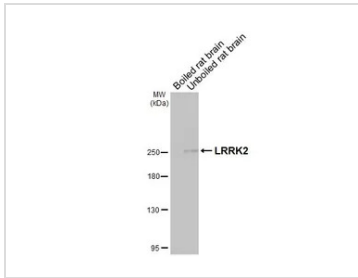
For laboratory research use only. Not for any clinical, therapeutic, or diagnostic use in humans or animals. Not for animal or human consumption.

Purchasers shall not, and agree not to enable third parties to, analyze, copy, reverse engineer or otherwise attempt to determine the structure or sequence of the product.



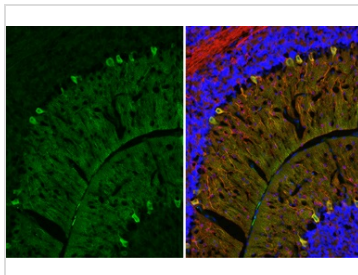
For full product information, images and publications, please visit our [website](#).

## DATA IMAGES



### GTX641333 WB Image

Boiled and unboiled rat tissue extracts (50 µg) were separated by 5% SDS-PAGE, and the membrane was blotted with LRRK2 antibody [GT48] (GTX641333) diluted at 1:1000. The HRP-conjugated anti-mouse IgG antibody (GTX213111-01) was used to detect the primary antibody.



### GTX641333 IHC-Fr Image

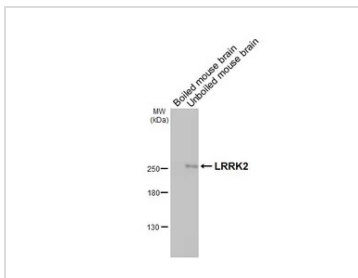
LRRK2 antibody [GT48] detects LRRK2 protein by immunohistochemical analysis.

Sample: Frozen-sectioned mouse cerebellum.

Green: LRRK2 stained by LRRK2 antibody [GT48] (GTX641333) diluted at 1:250.

Red: beta Tubulin 3/ Tuj1 stained by beta Tubulin 3/ Tuj1 antibody (GTX130245) diluted at 1:250.

Blue: Fluoroshield with DAPI (GTX30920).



### GTX641333 WB Image

Boiled and unboiled mouse tissue extracts (50 µg) were separated by 5% SDS-PAGE, and the membrane was blotted with LRRK2 antibody [GT48] (GTX641333) diluted at 1:1000. The HRP-conjugated anti-mouse IgG antibody (GTX213111-01) was used to detect the primary antibody.



For full product information, images and publications, please visit our [website](https://www.genetex.com).