

Legionella pneumophila antibody

Cat. No. GTX64135

Host	Rabbit
Clonality	Polyclonal
Isotype	IgG
Applications	ICC/IF, ELISA, Agglutination, IHC
Reactivity	Legionella pneumophila

Package
200 µl

Applications

Application Note

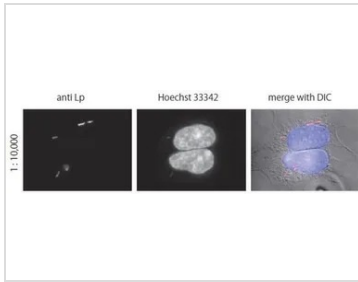
Immunofluorescent and Immunochemical staining (1:10,000-1:30,000 dilution), Immunohistochemistry (1:3,000-1:10,000), ELISA (1:10,000-1:30,000 dilution), Agglutination (1:2,000-1:5,000)

Properties

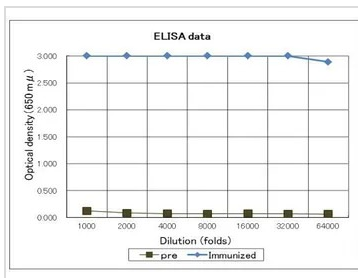
Form	Liquid
Buffer	Serum
Preservative	0.09% Sodium azide
Storage	Store as concentrated solution. Centrifuge briefly prior to opening vial. For short-term storage (1-2 weeks), store at 4°C. For long-term storage, aliquot and store at -20°C or below. Avoid multiple freeze-thaw cycles.
Concentration	Batch dependent (Please refer to the vial label for the specific concentration.)
Immunogen	Formaldehyde treated whole cells of Legionella pneumophila strain Philadelphia 1. Immunized 7 times at two weeks intervals.
Conjugation	Unconjugated
Note	For laboratory research use only. Not for any clinical, therapeutic, or diagnostic use in humans or animals. Not for animal or human consumption. Purchasers shall not, and agree not to enable third parties to, analyze, copy, reverse engineer or otherwise attempt to determine the structure or sequence of the product.



For full product information, images and publications, please visit our [website](#).

DATA IMAGES

GTx64135 ICC/IF Image

Immunofluorescent staining of *Legionella pneumophila* in the infected HEK293 cells using anti-*Legionella pneumophila* antibody. HEK293 cells were infected with *Legionella pneumophila* strain Philadelphia1 fixed with 4% formaldehyde and reacted with the anti-*Legionella pneumophila* antibody at 1/10,000 dilution. As the second antibody, goat Rodamine Red X conjugated anti-rabbit IgG antibody was used at 1/10,000 dilution. DNA was stained with Hoechst 33342 (center) and the images were merged with that of differential interference contrast microscope (right).


GTx64135 ELISA Image

Titration of antibody reactivity of anti-*Legionella pneumophila* antiserum by direct ELISA. Plate was coated with 100 μ l of 10⁹ cells/ml per well and 100 μ l of the antiserum at the indicated dilution was added to each well and incubated. After washing, goat anti-rabbit-IgG conjugated with HRP was added as 2nd antibody. Color was developed with TMB as substrate. "pre" is preimmune serum and "Immunized" is immunized serum



For full product information, images and publications, please visit our [website](http://www.genetex.com).