

LexA antibody

Cat. No. GTX64136

Host	Rabbit
Clonality	Polyclonal
Isotype	IgG
Applications	WB, IP, ChIP assay, IHC
Reactivity	E. coli

Package

50 µl

Applications

Application Note

Western blotting (1000-3000 fold dilution)

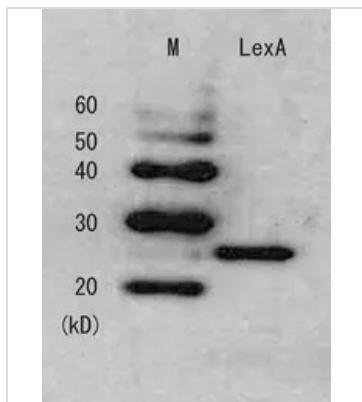
Properties

Form	Liquid
Buffer	Serum
Preservative	0.05% Sodium azide
Storage	Store as concentrated solution. Centrifuge briefly prior to opening vial. For short-term storage (1-2 weeks), store at 4°C. For long-term storage, aliquot and store at -20°C or below. Avoid multiple freeze-thaw cycles.
Concentration	Batch dependent (Please refer to the vial label for the specific concentration.)
Immunogen	LexA
Conjugation	Unconjugated
Note	<p>For laboratory research use only. Not for any clinical, therapeutic, or diagnostic use in humans or animals. Not for animal or human consumption.</p> <p>Purchasers shall not, and agree not to enable third parties to, analyze, copy, reverse engineer or otherwise attempt to determine the structure or sequence of the product.</p>



For full product information, images and publications, please visit our [website](#).

DATA IMAGES



GTX64136 WB Image

Detection of LexA repressor in the E. coli whole cell lysate by this antiserum



For full product information, images and publications, please visit our [website](#).