

Opsin Red / Green antibody [HL3484]

Cat. No. GTX641369

Host	Rabbit
Clonality	Monoclonal
Isotype	IgG
Applications	IHC-P
Reactivity	Human, Mouse, Rat

Package
100 µl, 25 µl

Applications

Application Note

*Optimal dilutions/concentrations should be determined by the researcher.

Suggested dilution	Recommended dilution
IHC-P	1:100-1:1000

Not tested in other applications.

Product Note This antibody was raised against human Green sensitive opsin Intracellular domain.

Properties

Form	Liquid
Buffer	PBS
Preservative	No preservatives
Storage	Store as concentrated solution. Centrifuge briefly prior to opening vial. For short-term storage (1-2 weeks), store at 4°C. For long-term storage, aliquot and store at -20°C or below. Avoid multiple freeze-thaw cycles.
Concentration	1 mg/ml (Please refer to the vial label for the specific concentration.)
Immunogen	Synthetic peptide encompassing a sequence within the Intracellular domain of human Green sensitive opsin. The exact sequence is proprietary.
Purification	Affinity purified by Protein A.
Conjugation	Unconjugated

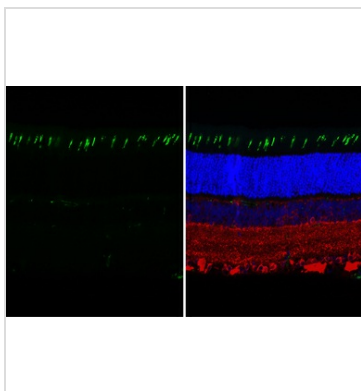
Note For laboratory research use only. Not for any clinical, therapeutic, or diagnostic use in humans or animals. Not for animal or human consumption.

Purchasers shall not, and agree not to enable third parties to, analyze, copy, reverse engineer or otherwise attempt to determine the structure or sequence of the product.



For full product information, images and publications, please visit our [website](#).

DATA IMAGES

**GTX641369 IHC-P Image**

Green sensitive opsin antibody [HL3484] detects Green sensitive opsin protein by immunohistochemical analysis.

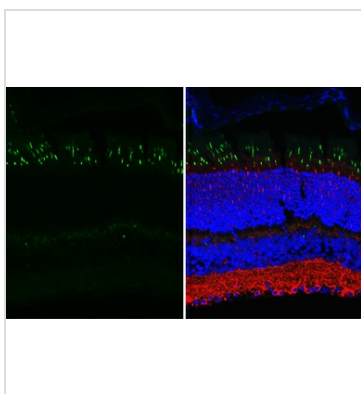
Sample: Paraffin-embedded rat eye.

Green: Green sensitive opsin stained by Green sensitive opsin antibody [HL3484] (GTX641369) diluted at 1:250.

Red: beta Tubulin 3/ Tuj1 stained by beta Tubulin 3/ Tuj1 antibody [GT11710] (GTX631836) diluted at 1:500.

Blue: Fluoroshield with DAPI (GTX30920).

Antigen Retrieval: Citrate buffer, pH 6.0, 15 min

**GTX641369 IHC-P Image**

Green sensitive opsin antibody [HL3484] detects Green sensitive opsin protein by immunohistochemical analysis.

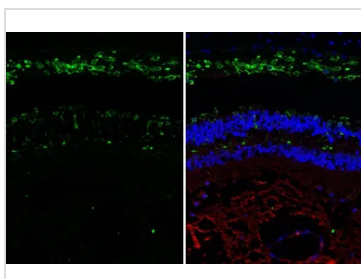
Sample: Paraffin-embedded mouse eye.

Green: Green sensitive opsin stained by Green sensitive opsin antibody [HL3484] (GTX641369) diluted at 1:250.

Red: beta Tubulin 3/ Tuj1 stained by beta Tubulin 3/ Tuj1 antibody [GT11710] (GTX631836) diluted at 1:500.

Blue: Fluoroshield with DAPI (GTX30920).

Antigen Retrieval: Citrate buffer, pH 6.0, 15 min

**GTX641369 IHC-P Image**

Opsin Red / Green antibody [HL3484] detects Opsin Red / Green protein by immunohistochemical analysis.

Sample: Paraffin-embedded human eye.

Green: Opsin Red / Green stained by Opsin Red / Green antibody [HL3484] (GTX641369) diluted at 1:250.

Red: beta Tubulin 3/ Tuj1 antibody [GT11710] (GTX631836) diluted at 1:500.

Blue: Fluoroshield with DAPI (GTX30920).

Antigen Retrieval: Citrate buffer, pH 6.0, 15 min



For full product information, images and publications, please visit our [website](#).