

GFAP antibody [GT51]

Cat. No. GTX641375

Host	Mouse
Clonality	Monoclonal
Isotype	IgG2b
Applications	ICC/IF
Reactivity	Rat

Package
100 µl, 25 µl

Applications

Application Note

*Optimal dilutions/concentrations should be determined by the researcher.

Suggested dilution	Recommended dilution
ICC/IF	1:100-1:1000

Not tested in other applications.

Properties

Form	Liquid
Buffer	PBS
Preservative	No preservatives
Storage	Store as concentrated solution. Centrifuge briefly prior to opening vial. For short-term storage (1-2 weeks), store at 4°C. For long-term storage, aliquot and store at -20°C or below. Avoid multiple freeze-thaw cycles.
Concentration	1 mg/ml (Please refer to the vial label for the specific concentration.)
Immunogen	The immunogen used to generate this antibody corresponds to human GFAP.
Purification	Affinity purified by Protein A.
Conjugation	Unconjugated

Note

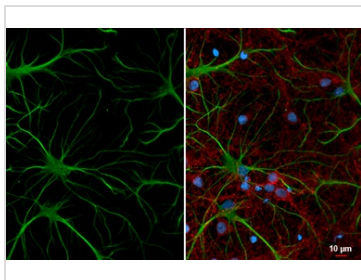
For laboratory research use only. Not for any clinical, therapeutic, or diagnostic use in humans or animals. Not for animal or human consumption.

Purchasers shall not, and agree not to enable third parties to, analyze, copy, reverse engineer or otherwise attempt to determine the structure or sequence of the product.



For full product information, images and publications, please visit our [website](#).

DATA IMAGES


GTX641375 ICC/IF Image

GFAP antibody [GT51] detects GFAP protein by immunofluorescent analysis.

Sample: DIV11 rat E18 hippocampal neurons and glial cells were fixed in 4% paraformaldehyde at RT for 15 min.

Green: GFAP stained by GFAP antibody [GT51] (GTX641375) diluted at 1:250.

Red: Tau, an axon marker, stained by Tau antibody (GTX130462) diluted at 1:500.

Blue: Fluoroshield with DAPI (GTX30920).



For full product information, images and publications, please visit our [website](#).