

Mrc1 (S. pombe) antibody

Cat. No. GTX64139

Host	Rabbit
Clonality	Polyclonal
Isotype	IgG
Applications	WB, IP
Reactivity	Schizosaccharomyces pombe

Package

50 µl

Applications

Application Note

Western blotting (5,000 dilution)

Calculated MW 114 kDa. ([Note](#))

Properties

Form	Liquid
Buffer	Serum
Preservative	0.05% Sodium azide
Storage	Store as concentrated solution. Centrifuge briefly prior to opening vial. For short-term storage (1-2 weeks), store at 4°C. For long-term storage, aliquot and store at -20°C or below. Avoid multiple freeze-thaw cycles.
Concentration	Batch dependent (Please refer to the vial label for the specific concentration.)
Immunogen	Purified recombinant protein containing amino acids 1~317 of Mrc1
Conjugation	Unconjugated

Note

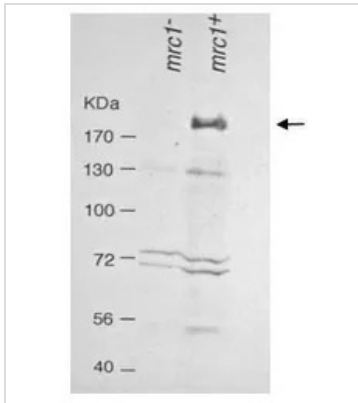
For laboratory research use only. Not for any clinical, therapeutic, or diagnostic use in humans or animals. Not for animal or human consumption.

Purchasers shall not, and agree not to enable third parties to, analyze, copy, reverse engineer or otherwise attempt to determine the structure or sequence of the product.



For full product information, images and publications, please visit our [website](#).

DATA IMAGES



GTX64139 WB Image

Western blot analysis of Mrc1 in the whole cell extracts Lane 1: *mrc1*⁻ strain Lane 2: Wild type strain



For full product information, images and publications, please visit our [website](https://www.genetex.com).