

NADase antibody

Cat. No. GTX64140

| | |
|---------------------|--|
| Host | Rabbit |
| Clonality | Polyclonal |
| Isotype | IgG |
| Applications | WB, IP, ELISA, Neutralizing/Inhibition |
| Reactivity | Streptococcus |

References (1)

Package

100 µl

Applications

Application Note

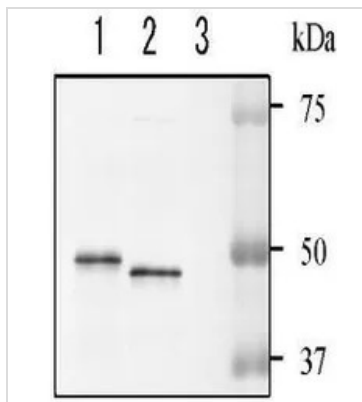
Western blotting (1:2,000-1:10,000 dilution)

Properties

| | |
|----------------------|---|
| Form | Liquid |
| Buffer | Serum |
| Preservative | 0.09% Sodium azide |
| Storage | Store as concentrated solution. Centrifuge briefly prior to opening vial. For short-term storage (1-2 weeks), store at 4°C. For long-term storage, aliquot and store at -20°C or below. Avoid multiple freeze-thaw cycles. |
| Concentration | Batch dependent (Please refer to the vial label for the specific concentration.) |
| Immunogen | Purified recombinant NADase of Group C hemolytic streptococci expressed in E. coli |
| Conjugation | Unconjugated |
| Note | <p>For laboratory research use only. Not for any clinical, therapeutic, or diagnostic use in humans or animals. Not for animal or human consumption.</p> <p>Purchasers shall not, and agree not to enable third parties to, analyze, copy, reverse engineer or otherwise attempt to determine the structure or sequence of the product.</p> |



For full product information, images and publications, please visit our [website](#).

DATA IMAGES

GTX64140 WB Image

Detection of NADase in the culture supernatant of hemolytic streptococci with anti-NADase. Lane 1: Culture supernatant of group A streptococcus Lane 2: Culture supernatant of group C streptococcus Lane 3: Culture medium only (negative control)



For full product information, images and publications, please visit our [website](#).