

Pad1 (S. pombe) antibody

Cat. No. GTX64143

Host	Rabbit
Clonality	Polyclonal
Isotype	IgG
Applications	WB, IP
Reactivity	Schizosaccharomyces pombe

Package
100 µl

Applications

Application Note

Immunoblotting (dilution: 1:300-1:1000)

Calculated MW 35 kDa. ([Note](#))

Properties

Form	Liquid
Buffer	Serum
Preservative	0.05% Sodium azide
Storage	Store as concentrated solution. Centrifuge briefly prior to opening vial. For short-term storage (1-2 weeks), store at 4°C. For long-term storage, aliquot and store at -20°C or below. Avoid multiple freeze-thaw cycles.
Concentration	Batch dependent (Please refer to the vial label for the specific concentration.)
Immunogen	Recombinant S. pombe full-length Pad1
Conjugation	Unconjugated

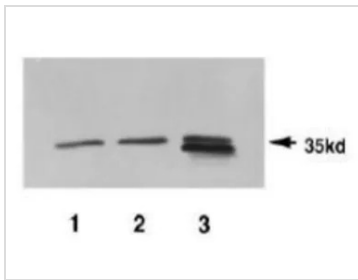
Note

For laboratory research use only. Not for any clinical, therapeutic, or diagnostic use in humans or animals. Not for animal or human consumption.

Purchasers shall not, and agree not to enable third parties to, analyze, copy, reverse engineer or otherwise attempt to determine the structure or sequence of the product.

For full product information, images and publications, please visit our [website](#).

DATA IMAGES



GTX64143 WB Image

Identification of Pad1 protein in crude extracts by anti-Pad1 antiserum Lane 1: Endogeneous Pad1 protein
Lane 2: Pad1 protein expressed in the cells carrying wild-type pad1 gene on plasmid Lane 3: Pad1 proteins expressed in the cells carrying both wild type pad1 gene and truncated pad1 gene encoding 35 kDa and 33 kDa protein, respectively.



For full product information, images and publications, please visit our [website](https://www.genetex.com).