

PCNA (*S. cerevisiae*) antibody

Cat. No. GTX64144

Host	Rabbit
Clonality	Polyclonal
Isotype	IgG
Applications	WB, IHC-Fr, IP, ChIP assay
Reactivity	Saccharomyces cerevisiae

References (3)

Package

100 µg

Applications

Application Note

Western blotting (1:1,000dilution), Immuno-precipitation (1:100)

Calculated MW 29 kDa. ([Note](#))

Properties

Form	Liquid
Buffer	Filter-sterilized PBS, 50% Glycerol
Preservative	No preservatives
Storage	Store as concentrated solution. Centrifuge briefly prior to opening vial. For short-term storage (1-2 weeks), store at 4°C. For long-term storage, aliquot and store at -20°C or below. Avoid multiple freeze-thaw cycles.
Concentration	Batch dependent (Please refer to the vial label for the specific concentration.)
Immunogen	Recombinant full-size PCNA (<i>S. cerevisiae</i> , 1-258 aa)
Conjugation	Unconjugated

Note

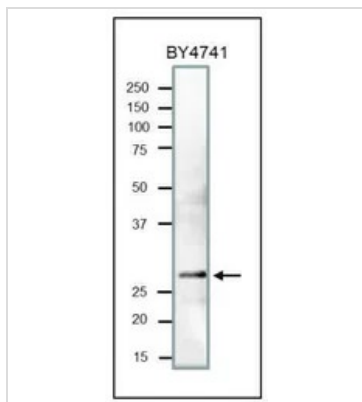
For laboratory research use only. Not for any clinical, therapeutic, or diagnostic use in humans or animals. Not for animal or human consumption.

Purchasers shall not, and agree not to enable third parties to, analyze, copy, reverse engineer or otherwise attempt to determine the structure or sequence of the product.



For full product information, images and publications, please visit our [website](#).

DATA IMAGES



GTX64144 WB Image

Western Blot of PCNA in crude extract of *S. cerevisiae*. The antibody was used at 1/1,000 dilution. Molecular mass of PCNA is 29 kDa. Crude extract of *S. cerevisiae* strain BY4741 (20 µg) applied.



For full product information, images and publications, please visit our [website](https://www.genetex.com).