

Psm1 (S. pombe) antibody

Cat. No. GTX64146

Host	Rabbit
Clonality	Polyclonal
Isotype	IgG
Applications	WB, IP
Reactivity	Schizosaccharomyces pombe

Package
100 µl

Applications

Application Note

Immunoblotting (dilution: 1:300-1:1,000)

Calculated MW	141 kDa. (Note)
Product Note	Specific to S. pombe

Properties

Form	Liquid
Buffer	Serum
Preservative	0.05% Sodium azide
Storage	Store as concentrated solution. Centrifuge briefly prior to opening vial. For short-term storage (1-2 weeks), store at 4°C. For long-term storage, aliquot and store at -20°C or below. Avoid multiple freeze-thaw cycles.
Concentration	Batch dependent (Please refer to the vial label for the specific concentration.)
Immunogen	Recombinant GST-Psm1 (N-terminal 1~631 region of S. pombe Psm1) fusion protein
Conjugation	Unconjugated

Note

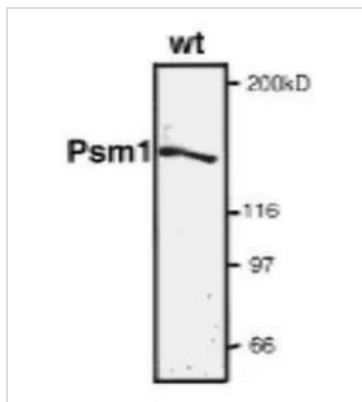
For laboratory research use only. Not for any clinical, therapeutic, or diagnostic use in humans or animals. Not for animal or human consumption.

Purchasers shall not, and agree not to enable third parties to, analyze, copy, reverse engineer or otherwise attempt to determine the structure or sequence of the product.



For full product information, images and publications, please visit our [website](#).

DATA IMAGES



GTX64146 WB Image

Detection of psm1 by immunoblot using this antibody (ref.1). Psm1 showed the expected 140 kD band.



For full product information, images and publications, please visit our [website](#).