

GPR120 antibody [HL3563]

Cat. No. GTX641469

Host	Rabbit
Clonality	Monoclonal
Isotype	IgG
Applications	ICC/IF, IHC-Fr
Reactivity	Human, Mouse

Package
100 µl, 25 µl

Applications

Application Note

*Optimal dilutions/concentrations should be determined by the researcher.

Suggested dilution	Recommended dilution
ICC/IF	1:100-1:1000
IHC-Fr	Assay dependent

Not tested in other applications.

Product Note This antibody was raised against human GPR120 Extracellular domain.

Properties

Form	Liquid
Buffer	PBS
Preservative	No preservatives
Storage	Store as concentrated solution. Centrifuge briefly prior to opening vial. For short-term storage (1-2 weeks), store at 4°C. For long-term storage, aliquot and store at -20°C or below. Avoid multiple freeze-thaw cycles.
Concentration	1 mg/ml (Please refer to the vial label for the specific concentration.)
Immunogen	Synthetic peptide encompassing a sequence within the Extracellular domain of human GPR120. The exact sequence is proprietary.
Purification	Affinity purified by Protein A.
Conjugation	Unconjugated

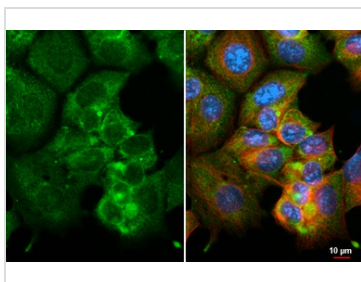
Note For laboratory research use only. Not for any clinical, therapeutic, or diagnostic use in humans or animals. Not for animal or human consumption.

Purchasers shall not, and agree not to enable third parties to, analyze, copy, reverse engineer or otherwise attempt to determine the structure or sequence of the product.



For full product information, images and publications, please visit our [website](#).

DATA IMAGES



GTX641469 ICC/IF Image

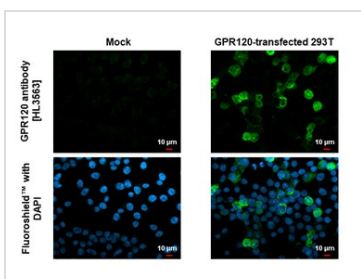
GPR120 antibody [HL3563] detects GPR120 protein by immunofluorescent analysis.

Sample: MCF-7 cells were fixed in ice-cold MeOH for 5 min.

Green: GPR120 stained by GPR120 antibody [HL3563] (GTX641469) diluted at 1:500.

Red: alpha Tubulin, a cytoskeleton marker, stained by alpha Tubulin antibody [GT114] (GTX628802) diluted at 1:1000.

Blue: Fluoroshield with DAPI (GTX30920).



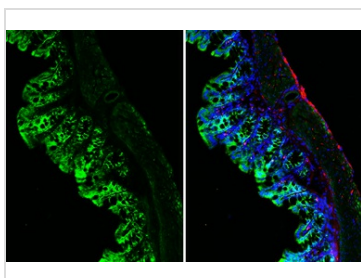
GTX641469 ICC/IF Image

GPR120 antibody [HL3563] detects GPR120 protein by immunofluorescent analysis.

Sample: Mock and transfected 293T cells were fixed in ice-cold MeOH for 5 min.

Green: GPR120 stained by GPR120 antibody [HL3563] (GTX641469) diluted at 1:500.

Blue: Fluoroshield with DAPI (GTX30920).



GTX641469 IHC-Fr Image

GPR120 antibody [HL3563] detects GPR120 protein by immunohistochemical analysis.

Sample: Frozen-sectioned mouse colon.

Green: GPR120 stained by GPR120 antibody [HL3563] (GTX641469) diluted at 1:250.

Red: alpha Tubulin antibody [GT114] (GTX628802) diluted at 1:1000.

Blue: Hoechst 33342 staining.



For full product information, images and publications, please visit our [website](#).